

Anti-NEURL2 Rabbit pAb



WL04745

For Research Use Only. Not For Use In Diagnostic Procedures

Product Information

Product name	Anti-NEURL2 Rabbit pAb		
Source	Rabbit		
Species reactivity	Human, Mouse, Rat		
Tested applications	WB	1:1000-1:2000	
Pack size	50/100/200/500/1000µl		
Storage	Store at -20°C. Avoid freeze/thaw cycles.		
Storage buffer	Supplied in 20 mM phosphate (pH 7.5), 150 mM NaCl, 100 µg/ml BSA, 50% glycerol and less than 0.02% sodium azide		

General Information

Background

NEURL2 is involved in the regulation of myofibril organization. Is likely the adaptor component of the E3 ubiquitin ligase complex in striated muscle, and it regulates the ubiquitin-mediated degradation of beta-catenin during myogenesis. Alternative splicing of this gene results in multiple transcript variants.

Immunogen

Polyclonal antibody is produced by immunizing animals with a synthetic peptide of NEURL2.

Purification

Polyclonal antibody was purified by Protein A affinity chromatography.

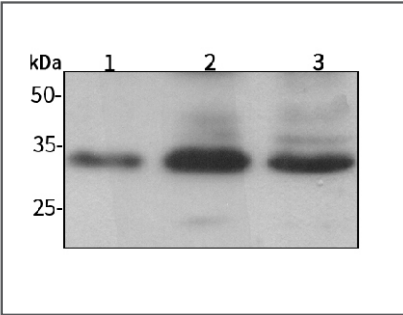
Anti-NEURL2 Rabbit pAb



WL04745

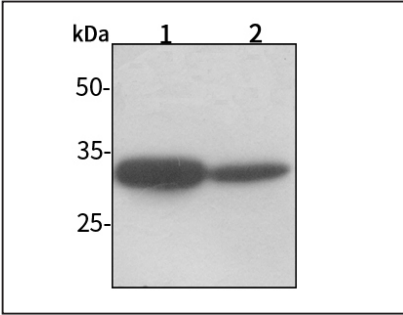
For Research Use Only. Not For Use In Diagnostic Procedures

Product Images



Western blot-Anti-NEURL2 pAb

Lane 1: Human HeLa cell lysate
Lane 2: Human MCF-7 cell lysate
Lane 3: Human HEK-293 cell lysate
All lanes: Anti-NEURL2 at 1:1000 dilution
Lysates/proteins at 20-50 µg per lane.
Predicted band size: 32 kDa
Observed band size: 32 kDa



Western blot-Anti-NEURL2 pAb

Lane 1: Mouse heart tissue lysate
Lane 2: Rat liver cell lysate
All lanes: Anti-NEURL2 at 1:1000 dilution
Lysates/proteins at 20-50 µg per lane.
Predicted band size: 32 kDa
Observed band size: 32 kDa