

## Anti-DACH1 Rabbit pAb



WL04747

For Research Use Only. Not For Use In Diagnostic Procedures

## Product Information

<b>Product name</b>	Anti-DACH1 Rabbit pAb	
<b>Source</b>	Rabbit	
<b>Species reactivity</b>	Human, Mouse, Rat	
<b>Tested applications</b>	WB	1:1000-1:2000
<b>Pack size</b>	50/100/200/500/1000µl	
<b>Storage</b>	Store at -20°C. <b>Avoid freeze/thaw cycles.</b>	
<b>Storage buffer</b>	Supplied in 20 mM phosphate (pH 7.5), 150 mM NaCl, 100 µg/ml BSA, 50% glycerol and less than 0.02% sodium azide	

## General Information

**Background**

DACH1, a homologue of the Drosophila dachshund gene, is a key regulator of cell fate determination during eye, leg, and brain development in the fly. Through interacting with NCoR and Smad4, DACH1 is able to inhibit the transforming growth factor-beta (TGF-beta) signaling pathway. DACH1 can inhibit breast cancer cellular proliferation via cyclin D1, suggesting a possible role in tumor suppression.

**Immunogen**

Polyclonal antibody is produced by immunizing animals with a synthetic peptide of DACH1.

**Purification**

Polyclonal antibody was purified by Protein A affinity chromatography.

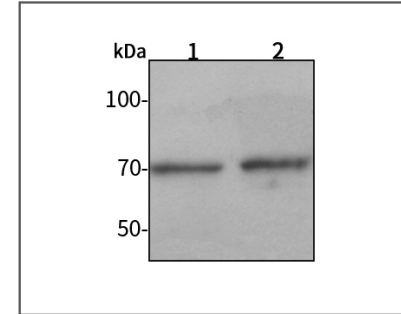
## Anti-DACH1 Rabbit pAb



WL04747

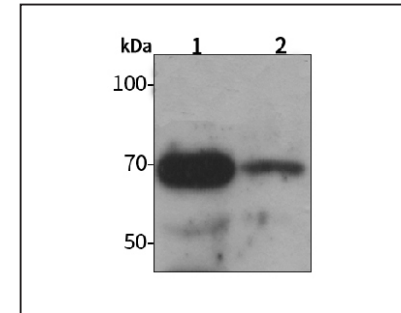
For Research Use Only. Not For Use In Diagnostic Procedures

## Product Images



## Western blot-Anti-DACH1 pAb

Lane 1: Human HeLa cell lysate  
 Lane 2: Human MCF-7 cell lysate  
 All lanes: Anti-DACH1 at 1:1000 dilution  
 Lysates/proteins at 20-50 µg per lane.  
 Predicted band size: 79 kDa  
 Observed band size: 70 kDa



## Western blot-Anti-DACH1 pAb

Lane 1: Rat lung tissue lysate  
 Lane 2: Rat colon tissue lysate  
 All lanes: Anti-DACH1 at 1:1000 dilution  
 Lysates/proteins at 20-50 µg per lane.  
 Predicted band size: 79 kDa  
 Observed band size: 70 kDa