

## Anti-KAT2B/PCAF Rabbit pAb



WL04515

For Research Use Only. Not For Use In Diagnostic Procedures

## Product Information

<b>Product name</b>	Anti-KAT2B/PCAF Rabbit pAb	
<b>Source</b>	Rabbit	
<b>Species reactivity</b>	Human, Mouse, Rat	
<b>Tested applications</b>	Western blot	1:1000-1:2000
	<i>*Suggested working dilutions are given as a guide only. It is recommended that the user titrates the product for use in their own experiment using appropriate negative and positive controls.</i>	
<b>Molecular Wt.</b>	93 kDa	
<b>Pack size</b>	50/100/200/500/1000µl	
<b>Storage</b>	Store at -20°C. <b>Avoid freeze/thaw cycles.</b>	
<b>Storage buffer</b>	Supplied in 20 mM phosphate (pH 7.5), 150 mM NaCl, 100 µg/ml BSA, 50% glycerol and less than 0.02% sodium azide	

## General Information

<b>Background</b>	CBP and p300 are large nuclear proteins that bind to many sequence-specific factors involved in cell growth and/or differentiation, including c-jun and the adenoviral oncoprotein E1A. PCAF exerts histone acetyltransferase activity in association with core histones (H3 and H4) and with nucleosome core particles, and functions to promote transcriptional activation. It has histone acetyl transferase activity with core histones and nucleosome core particles, indicating that this protein plays a direct role in transcriptional regulation.
<b>Immunogen</b>	Polyclonal antibody is produced by immunizing animals with a synthetic peptide of KAT2B/PCAF.
<b>Purification</b>	Polyclonal antibody was purified by Protein A affinity chromatography.

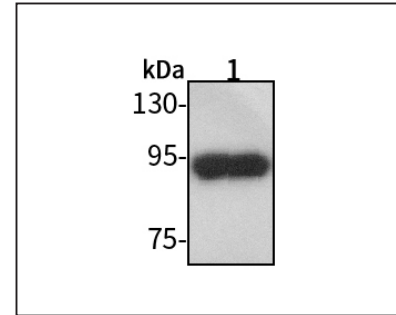
## Anti-KAT2B/PCAF Rabbit pAb



WL04515

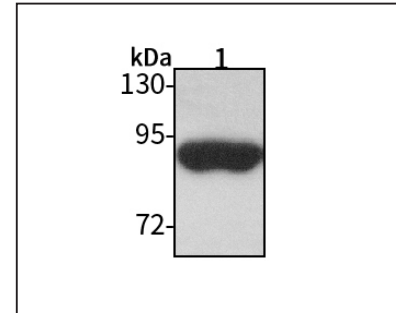
For Research Use Only. Not For Use In Diagnostic Procedures

## Product Images



## Western blot-Anti-KAT2B/PCAF pAb

Lane 1: Human A549 cell lysate 30µg  
 Separation gel: 8% polyacrylamide  
 Electrophoresis: 100V, 4°C, 3h  
 Transmembrane: 100V, 4°C, 1h  
 Blocking: 5% w/v nonfat dry milk, 1×TBST, at RT with gentle shaking  
 Primary antibody: 1:1000 in blocking buffer, 4°C, overnight  
 Secondary antibody (WLA023a) : 1:5000-1:10000, 45min  
 Detection: ECL, 30s-2min



## Western blot-Anti-KAT2B/PCAF pAb

Lane 1: Rat colon tissue lysate 30µg  
 Separation gel: 8% polyacrylamide  
 Electrophoresis: 100V, 4°C, 3h  
 Transmembrane: 100V, 4°C, 1h  
 Blocking: 5% w/v nonfat dry milk, 1×TBST, at RT with gentle shaking  
 Primary antibody: 1:1000 in blocking buffer, 4°C, overnight  
 Secondary antibody (WLA023a) : 1:5000-1:10000, 45min  
 Detection: ECL, 30s-2min