

Anti-alpha Adaptin Rabbit pAb



WL04507

For Research Use Only. Not For Use In Diagnostic Procedures

Product Information

Product name	Anti-alpha Adaptin Rabbit pAb	
Source	Rabbit	
Species reactivity	Human	
Tested applications	WB	1:500-1:1000
Pack size	50/100/200/500/1000µl	
Storage	Store at -20°C. Avoid freeze/thaw cycles.	
Storage buffer	Supplied in 20 mM phosphate (pH 7.5), 150 mM NaCl, 100 µg/ml BSA, 50% glycerol and less than 0.02% sodium azide	

General Information

Background AP2A1 encodes the alpha 1 adaptin subunit of the adaptor protein 2 (AP-2) complex found in clathrin coated vesicles. Adaptor protein (AP) complexes are cytosolic heterotetramers that mediate the sorting of membrane proteins in the secretory and endocytic pathways. AP complexes also play a pivotal role in the cargo selection by recognizing the sorting signals within the cytoplasmic tail of integral membrane proteins.

Immunogen Polyclonal antibody is produced by immunizing animals with a synthetic peptide of alpha Adaptin.

Purification Polyclonal antibody was purified by immunogen affinity chromatography.

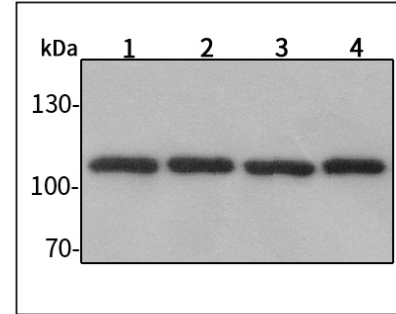
Anti-alpha Adaptin Rabbit pAb



WL04507

For Research Use Only. Not For Use In Diagnostic Procedures

Product Images



Western blot-Anti-alpha Adaptin pAb

Lane 1: Human Hela cell lysate

Lane 2: Human MCF-7 cell lysate

Lane 3: Human HEK-293 cell lysate

Lane 4: Human A549 cell lysate

All lanes: Anti-alpha Adaptin at 1:1000 dilution

Lysates/proteins at 20-50 µg per lane.

Predicted band size: 108 kDa

Observed band size: 108 kDa