

## Anti-UBE2V1 Rabbit pAb



WL04482

For Research Use Only. Not For Use In Diagnostic Procedures

## Product Information

<b>Product name</b>	Anti-UBE2V1 Rabbit pAb	
<b>Source</b>	Rabbit	
<b>Species reactivity</b>	Human, Mouse, Rat	
<b>Tested applications</b>	Western blot	1:1000-1:2000

*\*Suggested working dilutions are given as a guide only. It is recommended that the user titrates the product for use in their own experiment using appropriate negative and positive controls.*

**Molecular Wt.** 16 kDa

**Pack size** 50/100/200/500/1000µl

**Storage** Store at -20°C. **Avoid freeze/thaw cycles.**

**Storage buffer** Supplied in 20 mM phosphate (pH 7.5), 150 mM NaCl, 100 µg/ml

BSA, 50% glycerol and less than 0.02% sodium azide

## General Information

**Background** UBE2V1 (Ubiquitin-conjugating enzyme E2 variant 1) is also named as CROC1, UBE2V, UEV1 and belongs to the ubiquitin-conjugating enzyme family. They have sequence similarity to other ubiquitin-conjugating enzymes but lack the conserved cysteine residue that is critical for the catalytic activity of E2s. Therefore, Uev1A does not have ubiquitin-conjugating activity in vitro. It is thought to be involved in the control of differentiation by altering cell cycle behavior. CROC1 transcripts in all human tissues examined, with highest levels in brain, skeletal muscle, and kidney.

**Immunogen** Polyclonal antibody is produced by immunizing animals with a synthetic peptide of UBE2V1.

**Purification** Polyclonal antibody was purified by Protein A affinity chromatography.

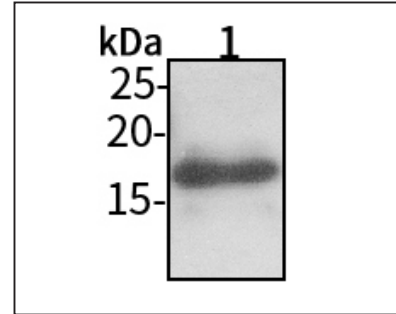
## Anti-UBE2V1 Rabbit pAb



WL04482

For Research Use Only. Not For Use In Diagnostic Procedures

## Product Images



## Western blot-Anti-UBE2V1 pAb

Lane 1: Human HeLa cell lysate 30µg

Separation gel: 15% polyacrylamide

Electrophoresis: 100V, 4°C, 3h

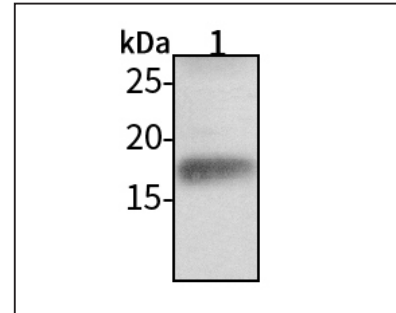
Transmembrane: 100V, 4°C, 1h

Blocking: 5% w/v nonfat dry milk, 1×TBST, at RT with gentle shaking

Primary antibody: 1:1000 in blocking buffer, 4°C, overnight

Secondary antibody (WLA023a) : 1:5000-1:10000, 45min

Detection: ECL, 30s-2min



## Western blot-Anti-UBE2V1 pAb

Lane 1: Mouse stomach tissue lysate 30µg

Separation gel: 15% polyacrylamide

Electrophoresis: 100V, 4°C, 3h

Transmembrane: 100V, 4°C, 1h

Blocking: 5% w/v nonfat dry milk, 1×TBST, at RT with gentle shaking

Primary antibody: 1:1000 in blocking buffer, 4°C, overnight

Secondary antibody (WLA023a) : 1:5000-1:10000, 45min

Detection: ECL, 30s-2min