

## Anti-TERT Rabbit pAb



WL02685

For Research Use Only. Not For Use In Diagnostic Procedures

## Product Information

<b>Product name</b>	Anti-TERT Rabbit pAb	
<b>Source</b>	Rabbit	
<b>Species reactivity</b>	Human	
<b>Tested applications</b>	Western blot	1:1000-1:2000

*\*Suggested working dilutions are given as a guide only. It is recommended that the user titrates the product for use in their own experiment using appropriate negative and positive controls.*

<b>Molecular Wt.</b>	127 kDa
<b>Pack size</b>	50/100/200/500/1000µl
<b>Storage</b>	Store at -20°C. <b>Avoid freeze/thaw cycles.</b>
<b>Storage buffer</b>	Supplied in 20 mM phosphate (pH 7.5), 150 mM NaCl, 100 µg/ml BSA, 50% glycerol and less than 0.02% sodium azide

## General Information

<b>Background</b>	TERT is a catalytic subunit of the enzyme telomerase, which, together with the telomerase RNA component (TERC), comprises the most important unit of the telomerase complex. Telomerase is an RNA-dependent DNA polymerase that catalyzes the addition of telomeric repeat sequences to chromosome ends. Telomerase expression plays a role in cellular senescence, as it is normally repressed in postnatal somatic cells, resulting in progressive shortening of telomeres. Human TERT, also designated hEST2 (for ever shorter telomeres), is homologous to the p123 telomerase protein from Euplotes and to the yeast Est2 protein.
<b>Immunogen</b>	Polyclonal antibody is produced by immunizing animals with a synthetic peptide of Telomerase reverse transcriptase /TERT.
<b>Purification</b>	Polyclonal antibody was purified by Protein A affinity chromatography.

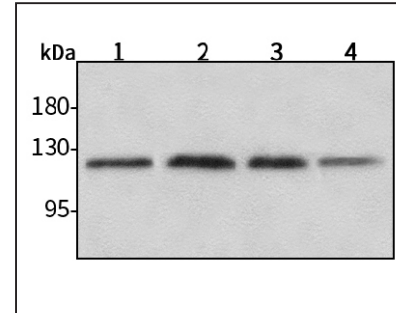
## Anti-TERT Rabbit pAb



WL02685

For Research Use Only. Not For Use In Diagnostic Procedures

## Product Images



Western blot-Anti-TERT pAb

Lane 1: Human HepG2 cell lysate 30µg

Lane 2: Human HeLa cell lysate 30µg

Lane 3: Human BGC-823 cell lysate 30µg

Lane 4: Human MCF-7 cell lysate 30µg

Separation gel: 8% polyacrylamide

Electrophoresis: 100V, 4°C, 3h

Transmembrane: 100V, 4°C, 1h

Blocking: 5% w/v nonfat dry milk, 1× TBST, at RT with gentle shaking

Primary antibody: 1:1000 in blocking buffer, 4°C, overnight

Secondary antibody (WLA023a) : 1:5000-1:10000, 45min

Detection: ECL, 30s-2min