

Anti-ACTL6A Rabbit pAb



WL04449

For Research Use Only. Not For Use In Diagnostic Procedures

Product Information

Product name	Anti-ACTL6A Rabbit pAb
Source	Rabbit
Species reactivity	Human, Mouse, Rat
Tested applications	WB 1:1000-1:2000
Pack size	50/100/200/500/1000µl
Storage	Store at -20°C. Avoid freeze/thaw cycles.
Storage buffer	Supplied in 20 mM phosphate (pH 7.5), 150 mM NaCl, 100 µg/ml BSA, 50% glycerol and less than 0.02% sodium azide

General Information

Background ACTL6A, is a family member of actin-related proteins (ARPs), which share significant amino acid sequence identity to conventional actins. Both actins and ARPs have an actin fold, which is an ATP-binding cleft, as a common feature. The ARPs are involved in diverse cellular processes, including vesicular transport, spindle orientation, nuclear migration and chromatin remodeling.

Immunogen Polyclonal antibody is produced by immunizing animals with a synthetic peptide of ACTL6A.

Purification Polyclonal antibody was purified by Protein A affinity chromatography.

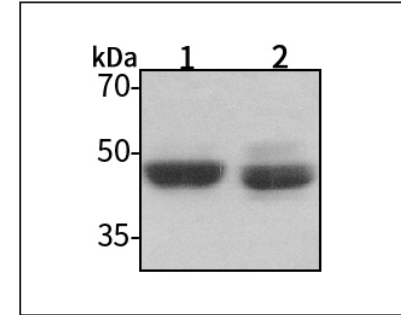
Anti-ACTL6A Rabbit pAb



WL04449

For Research Use Only. Not For Use In Diagnostic Procedures

Product Images



Western blot-Anti-ACTL6A pAb

Lane 1: Human A549 cell lysate

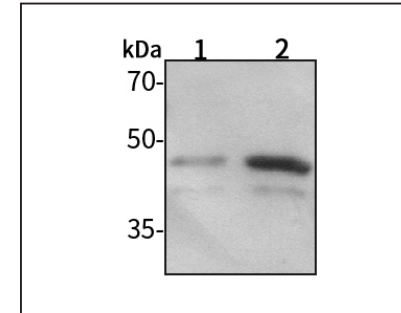
Lane 2: Human HUVEC cell lysate

All lanes: Anti-ACTL6A at 1:1000 dilution

Lysates/proteins at 20-50 µg per lane.

Predicted band size: 47 kDa

Observed band size: 47 kDa



Western blot-Anti-ACTL6A pAb

Lane 1: Rat lung tissue lysate

Lane 2: Rat colon tissue lysate

All lanes: Anti-ACTL6A at 1:1000 dilution

Lysates/proteins at 20-50 µg per lane.

Predicted band size: 47 kDa

Observed band size: 47 kDa