

Anti-UPF3A Rabbit pAb



WL04551

For Research Use Only. Not For Use In Diagnostic Procedures

Product Information

Product name	Anti-UPF3A Rabbit pAb	
Source	Rabbit	
Species reactivity	Human, Mouse, Rat	
Tested applications	Western blot	1:500-1:1000
	<i>*Suggested working dilutions are given as a guide only. It is recommended that the user titrates the product for use in their own experiment using appropriate negative and positive controls.</i>	
Molecular Wt.	51 kDa	
Pack size	50/100/200/500/1000µl	
Storage	Store at -20°C. Avoid freeze/thaw cycles.	
Storage buffer	Supplied in 20 mM phosphate (pH 7.5), 150 mM NaCl, 100 µg/ml BSA, 50% glycerol and less than 0.02% sodium azide	

General Information

Background	In eukaryotes, it is essential to have the ability to detect and degrade transcripts that lack full coding potential. mRNA surveillance detects exported mRNAs with truncated open reading frames and initiates nonsense-mediated mRNA decay (NMD). When translation ends upstream from the last exon-exon junction, this triggers NMD to degrade mRNAs containing premature stop codons. This protein binds to the mRNA and remains bound after nuclear export, acting as a nucleocytoplasmic shuttling protein.
Immunogen	Polyclonal antibody is produced by immunizing animals with a synthetic peptide of UPF3A.
Purification	Polyclonal antibody was purified by immunogen affinity chromatography.

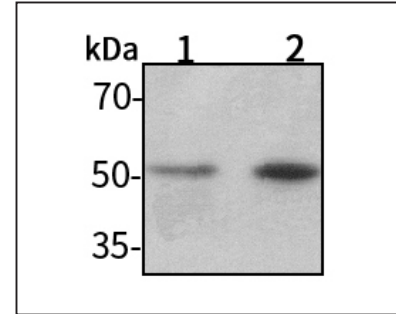
Anti-UPF3A Rabbit pAb



WL04551

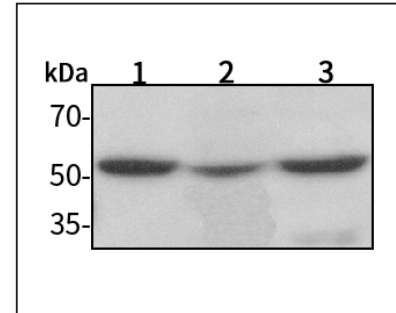
For Research Use Only. Not For Use In Diagnostic Procedures

Product Images



Western blot-Anti-UPF3A pAb

Lane 1: Human HeLa cell lysate 30µg
 Lane 2: Human MCF-7 cell lysate 30µg
 Separation gel: 10% polyacrylamide
 Electrophoresis: 100V, 4°C, 3h
 Transmembrane: 100V, 4°C, 1h
 Blocking: 5% w/v nonfat dry milk, 1×TBST, at RT with gentle shaking
 Primary antibody: 1:1000 in blocking buffer, 4°C, overnight
 Secondary antibody (WLA023a) : 1:5000-1:10000, 45min
 Detection: ECL, 30s-2min



Western blot-Anti-UPF3A pAb

Lane 1: Mouse heart tissue lysate 30µg
 Lane 2: Rat colon tissue lysate 30µg
 Lane 3: Rat stomach tissue lysate 30µg
 Separation gel: 10% polyacrylamide
 Electrophoresis: 100V, 4°C, 3h
 Transmembrane: 100V, 4°C, 1h
 Blocking: 5% w/v nonfat dry milk, 1×TBST, at RT with gentle shaking
 Primary antibody: 1:1000 in blocking buffer, 4°C, overnight
 Secondary antibody (WLA023a) : 1:5000-1:10000, 45min
 Detection: ECL, 30s-2min