

Anti-Cdc25A Rabbit pAb



WL04650

For Research Use Only. Not For Use In Diagnostic Procedures

Product Information

Product name	Anti-Cdc25A Rabbit pAb		
Source	Rabbit		
Species reactivity	Human, Mouse, Rat		
Tested applications	WB	1:1000-1:2000	
Pack size	50/100/200/500/1000µl		
Storage	Store at -20°C. Avoid freeze/thaw cycles.		
Storage buffer	Supplied in 20 mM phosphate (pH 7.5), 150 mM NaCl, 100 µg/ml BSA, 50% glycerol and less than 0.02% sodium azide		

General Information

Background	CDC25A belongs to the MPI phosphatase family. It is a tyrosine protein phosphatase which functions as a dosage-dependent inducer of mitotic progression. CDC25A directly dephosphorylates CDC2 and stimulates its kinase activity.
-------------------	--

Immunogen	Polyclonal antibody is produced by immunizing animals with a recombinant protein of Cdc25A.
------------------	---

Purification	Polyclonal antibody was purified by Protein A affinity chromatography.
---------------------	--

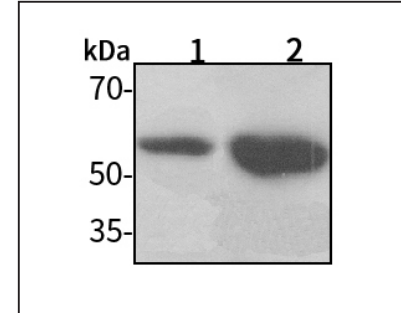
Anti-Cdc25A Rabbit pAb



WL04650

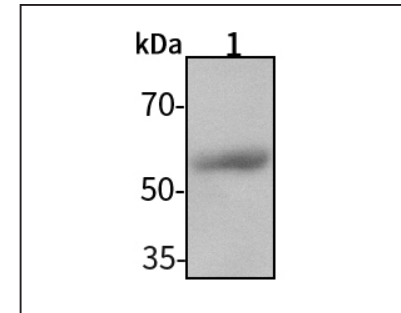
For Research Use Only. Not For Use In Diagnostic Procedures

Product Images



Western blot-Anti-Cdc25A pAb

Lane 1: Human MCF-7 cell lysate
 Lane 2: HumanHUVEC cell lysate
 All lanes: Anti-Cdc25A at 1:1000 dilution
 Lysates/proteins at 20-50 µg per lane.
 Predicted band size: 59 kDa
 Observed band size: 59 kDa



Western blot-Anti-Cdc25A pAb

Lane 1: Mouse heart tissue lysate
 All lanes: Anti-Cdc25A at 1:1000 dilution
 Lysates/proteins at 20-50 µg per lane.
 Predicted band size: 59 kDa
 Observed band size: 59 kDa