

Anti-Pericentrin Rabbit pAb



WL02554

For Research Use Only. Not For Use In Diagnostic Procedures

Product Information

Product name	Anti-Pericentrin Rabbit pAb		
Source	Rabbit		
Species reactivity	Human, Mouse, Rat		
Tested applications	Western blot	1:500-1:1000	
	Immunohistochemistry	1:200-1:600	
	<i>*Suggested working dilutions are given as a guide only. It is recommended that the user titrates the product for use in their own experiment using appropriate negative and positive controls.</i>		
Molecular Wt.	75 kDa		
Pack size	50/100/200/500/1000µl		
Storage	Store at -20°C. Avoid freeze/thaw cycles.		
Storage buffer	Supplied in 20 mM phosphate (pH 7.5), 150 mM NaCl, 100 µg/ml BSA, 50% glycerol and less than 0.02% sodium azide		

General Information

Background Pericentrin encoded by this gene is expressed in the cytoplasm and centrosome throughout the cell cycle, and to a lesser extent, in the nucleus. It is an integral component of the PCM, which is a centrosome scaffold that anchors microtubule nucleating complexes and other centrosomal proteins. Pericentrin is highly abundant in skeletal muscle, indicating that it may be involved in muscle insulin action. Pericentrin is also involved in neuronal development through its interaction with DISC1 to regulate microtubule organization.

Immunogen Polyclonal antibody is produced by immunizing animals with a synthetic peptide of Pericentrin.

Purification Polyclonal antibody was purified by immunogen affinity chromatography.

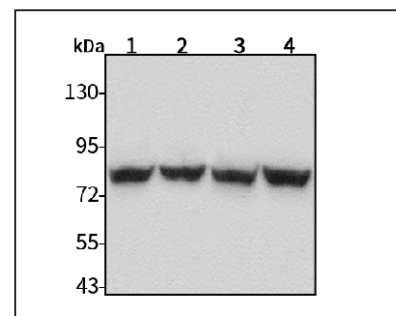
Anti-Pericentrin Rabbit pAb



WL02554

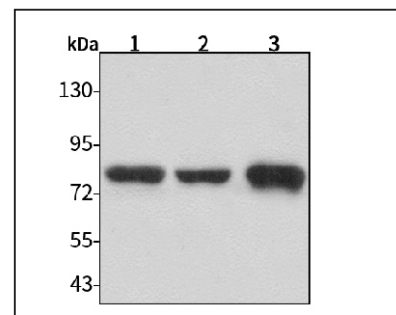
For Research Use Only. Not For Use In Diagnostic Procedures

Product Images



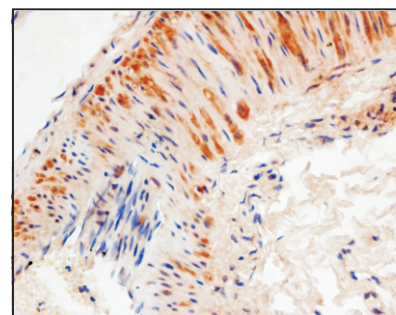
Western blot-Anti-Pericentrin pAb

Lane 1: Human BGC-823 cell lysate 30µg
 Lane 2: Human MGC-803 cell lysate 30µg
 Lane 3: Human SGC-7901 cell lysate 30µg
 Lane 4: Human MCF-7 cell lysate 30µg
 Separation gel: 8% polyacrylamide
 Electrophoresis: 100V, 4°C, 3h
 Transmembrane: 100V, 4°C, 1h
 Blocking: 5% w/v nonfat dry milk, 1×TBST, at RT with gentle shaking
 Primary antibody: 1:1000 in blocking buffer, 4°C, overnight
 Secondary antibody (WLA023a) : 1:5000-1:10000, 45min
 Visualization: ECL



Western blot-Anti-Pericentrin pAb

Lane 1: Mouse lung tissue lysate 30µg
 Lane 2: Rat spleen tissue lysate 30µg
 Lane 3: Rat stomach tissue lysate 30µg
 Separation gel: 8% polyacrylamide
 Electrophoresis: 100V, 4°C, 3h
 Transmembrane: 100V, 4°C, 1h
 Blocking: 5% w/v nonfat dry milk, 1×TBST, at RT with gentle shaking
 Primary antibody: 1:1000 in blocking buffer, 4°C, overnight
 Secondary antibody (WLA023a) : 1:5000-1:10000, 45min
 Visualization: ECL



Immunohistochemistry-Anti-Pericentrin pAb

Sample: Human lymph node tissue
 Antigen retrieval: pH 9.0 Tris-EDTA buffer
 Primary antibody: 1:300, 4°C, overnight
 Secondary antibody-Biotin: 1:150, 37°C, 1h
 Streptavidin-HRP: 1:200, 37°C, 30min
 Color Developing: DAB

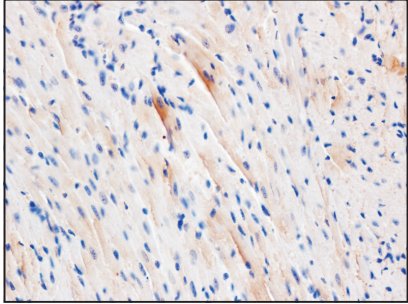
Anti-Pericentrin Rabbit pAb



WL02554

For Research Use Only. Not For Use In Diagnostic Procedures

Product Images



Immunohistochemistry-Anti-Pericentrin pAb

Sample: Mouse heart (LPS treated) tissue

Antigen retrieval: pH 9.0 Tris-EDTA buffer

Primary antibody: 1:300, 4°C, overnight

Secondary antibody-Biotin: 1:150, 37°C, 1h

Streptavidin-HRP: 1:200, 37°C, 30min

Color Developing: DAB