

Anti-Bad Rabbit pAb



WL02140

For Research Use Only. Not For Use In Diagnostic Procedures

Product Information

Product name	Anti-Bad Rabbit pAb	
Source	Rabbit	
Species reactivity	Human, Mouse, Rat	
Tested applications	WB	1:500-1:1000
Pack size	50/100/200/500/1000µl	
Storage	Store at -20°C. Avoid freeze/thaw cycles.	
Storage buffer	Supplied in 20 mM phosphate (pH 7.5), 150 mM NaCl, 100 µg/ml BSA, 50% glycerol and less than 0.02% sodium azide	

General Information

Background

The Bad encoded by this gene is a member of the BCL-2 family. BCL-2 family members are known to be regulators of programmed cell death. Bad positively regulates cell apoptosis by forming heterodimers with BCL-xL and BCL-2, and reversing their death repressor activity. Proapoptotic activity of this protein is regulated through its phosphorylation. Protein kinases AKT and MAP kinase, as well as protein phosphatase calcineurin were found to be involved in the regulation of this protein.

Immunogen

Polyclonal antibody is produced by immunizing animals with a synthetic peptide of Bad.

Purification

Polyclonal antibody was purified by immunogen affinity chromatography.

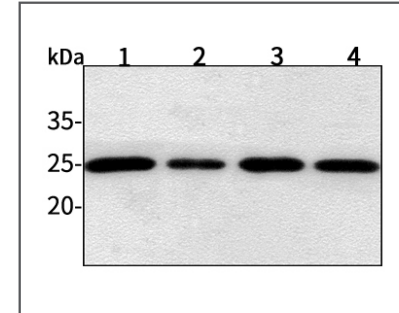
Anti-Bad Rabbit pAb



WL02140

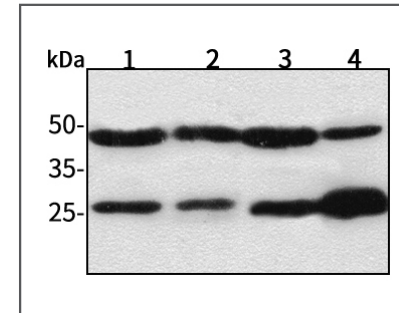
For Research Use Only. Not For Use In Diagnostic Procedures

Product Images



Western blot-Anti-Bad pAb

Lane 1: Human HepG2 cell lysate
 Lane 2: Human Hela cell lysate
 Lane 3: Human BGC-823 cell lysate
 Lane 4: Human MGC-803 cell lysate
 All lanes: Anti-Bad at 1:1000 dilution
 Lysates/proteins at 20-50 µg per lane.
 Predicted band size: 18 kDa
 Observed band size: 21-25, 42-50 kDa



Western blot-Anti-Bad pAb

Lane 1: Mouse kidney tissue lysate
 Lane 2: Mouse heart tissue lysate
 Lane 3: Rat liver tissue lysate
 Lane 4: Rat brain tissue lysate
 All lanes: Anti-Bad at 1:1000 dilution
 Lysates/proteins at 20-50 µg per lane.
 Predicted band size: 18 kDa
 Observed band size: 21-25, 42-50 kDa