

Anti-Dishevelled 3 Rabbit pAb



WL04721

For Research Use Only. Not For Use In Diagnostic Procedures

Product Information

Product name	Anti-Dishevelled 3 Rabbit pAb	
Source	Rabbit	
Species reactivity	Human, Mouse, Rat	
Tested applications	WB	1:500-1:1000
Pack size	50/100/200/500/1000µl	
Storage	Store at -20°C. Avoid freeze/thaw cycles.	
Storage buffer	Supplied in 20 mM phosphate (pH 7.5), 150 mM NaCl, 100 µg/ml BSA, 50% glycerol and less than 0.02% sodium azide	

General Information

Background	Dishevelled 3 is a member of a multi-gene family which shares strong similarity with the Drosophila dishevelled gene, dsh. The Drosophila dishevelled gene encodes a cytoplasmic phosphoprotein that regulates cell proliferation.
-------------------	--

Immunogen	Polyclonal antibody is produced by immunizing animals with a synthetic peptide of Dishevelled 3.
------------------	--

Purification	Polyclonal antibody was purified by immunogen affinity chromatography.
---------------------	--

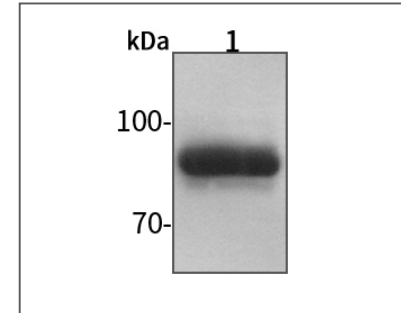
Anti-Dishevelled 3 Rabbit pAb



WL04721

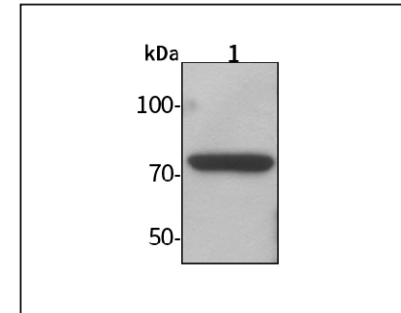
For Research Use Only. Not For Use In Diagnostic Procedures

Product Images



Western blot-Anti-Dishevelled 3 pAb

Lane 1: Human HUVEC cell lysate
 All lanes: Anti-Dishevelled 3 at 1:1000 dilution
 Lysates/proteins at 20-50 µg per lane.
 Predicted band size: 78 kDa
 Observed band size: 95 kDa



Western blot-Anti-Dishevelled 3 pAb

Lane 1: Mouse liver tissue lysate
 All lanes: Anti-Dishevelled 3 at 1:1000 dilution
 Lysates/proteins at 20-50 µg per lane.
 Predicted band size: 78 kDa
 Observed band size: 95 kDa