

Anti-Integrin beta 4 Rabbit pAb



WL04448

For Research Use Only. Not For Use In Diagnostic Procedures

Product Information

Product name	Anti-Integrin beta 4 Rabbit pAb	
Source	Rabbit	
Species reactivity	Human, Mouse, Rat	
Tested applications	WB	1:1000-1:2000
Pack size	50/100/200/500/1000µl	
Storage	Store at -20°C. Avoid freeze/thaw cycles.	
Storage buffer	Supplied in 20 mM phosphate (pH 7.5), 150 mM NaCl, 100 µg/ml BSA, 50% glycerol and less than 0.02% sodium azide	

General Information

Background

Integrins are heterodimers comprised of alpha and beta subunits, that are noncovalently associated transmembrane glycoprotein receptors. Integrins not only transmit signals to cells in response to the extracellular environment (outside-in signaling), but also sense intracellular cues to alter their interaction with extracellular environment (inside-out signaling). ITGB4, also known as CD104, is a 1,822 amino acid single-pass type I membrane protein belonging to the Integrin chain family. Integrin β4 is an important component in several growth factor induced signaling pathways that are involved in tumorigenesis and invasive cell growth.

Immunogen

Polyclonal antibody is produced by immunizing animals with a synthetic peptide of Integrin beta 4.

Purification

Polyclonal antibody was purified by Protein A affinity chromatography.

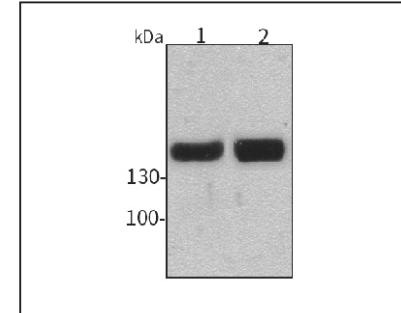
Anti-Integrin beta 4 Rabbit pAb



WL04448

For Research Use Only. Not For Use In Diagnostic Procedures

Product Images



Western blot-Anti-Integrin beta 4 pAb

Lane 1: Human HEK-293 cell lysate

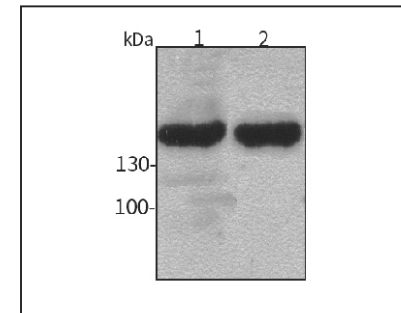
Lane 2: Human MCF-7 cell lysate

All lanes: Anti-Integrin beta 4 at 1:1000 dilution

Lysates/proteins at 20-50 µg per lane.

Predicted band size: 202 kDa

Observed band size: 202 kDa



Western blot-Anti-Integrin beta 4 pAb

Lane 1: Mouse heart tissue lysate

Lane 2: Rat heart tissue lysate

All lanes: Anti-Integrin beta 4 at 1:1000 dilution

Lysates/proteins at 20-50 µg per lane.

Predicted band size: 202 kDa

Observed band size: 202 kDa