

Anti-CARD9 Rabbit pAb



WL04806

For Research Use Only. Not For Use In Diagnostic Procedures

Product Information

Product name	Anti-CARD9 Rabbit pAb		
Source	Rabbit		
Species reactivity	Human		
Tested applications	WB	1:1000-1:2000	
Pack size	50/100/200/500/1000µl		
Storage	Store at -20°C. Avoid freeze/thaw cycles.		
Storage buffer	Supplied in 20 mM phosphate (pH 7.5), 150 mM NaCl, 100 µg/ml BSA, 50% glycerol and less than 0.02% sodium azide		

General Information

Background

CARD9, a member of the caspase recruitment domain (CARD) protein family, plays an important regulatory role in cell apoptosis. CARD is a protein interaction domain known to participate in activation or suppression of CARD containing members of the caspase family, and thus plays an important regulatory role in cell apoptosis.

Immunogen

Polyclonal antibody is produced by immunizing animals with a synthetic peptide of CARD9.

Purification

Polyclonal antibody was purified by Protein A affinity chromatography.

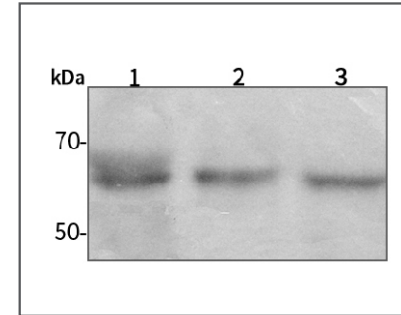
Anti-CARD9 Rabbit pAb



WL04806

For Research Use Only. Not For Use In Diagnostic Procedures

Product Images



Western blot-Anti-CARD9 pAb

Lane 1: Human HEK-293 cell lysate

Lane 2: Human A549 cell lysate

Lane 3: Human HUVEC cell lysate

All lanes: Anti-CARD9 at 1:1000 dilution

Lysates/proteins at 20-50 µg per lane.

Predicted band size: 62 kDa

Observed band size: 62 kDa