

Anti-NF2/Merlin Rabbit pAb



WL00308

For Research Use Only. Not For Use In Diagnostic Procedures

Product Information

Product name	Anti-NF2/Merlin Rabbit pAb	
Source	Rabbit	
Species reactivity	Human, Mouse, Rat	
Tested applications	WB	1:1000-1:1500
Pack size	50/100/200/500/1000µl	
Storage	Store at -20°C. Avoid freeze/thaw cycles.	
Storage buffer	Supplied in 20 mM phosphate (pH 7.5), 150 mM NaCl, 100 µg/ml BSA, 50% glycerol and less than 0.02% sodium azide	

General Information

Background Merlin (moesin, ezrin, and radixin like protein), the NF2 gene product, has striking similarity to ezrin, radixin, and moesin (ERM). Regulation of merlin (aka schwannomin) and ERM proteins involves intramolecular and intermolecular head-to-tail associations between family members. Merlin and ERM proteins act as linkers between the plasma membrane and the cytoskeleton, affecting cell morphology, polarity, and signal transduction. Merlin is phosphorylated by the Rac/Cdc42 effector p21-activated kinase (PAK) at Ser518, negatively regulating Rac.

Immunogen Polyclonal antibody is produced by immunizing animals with a synthetic peptide of NF2/Merlin.

Purification Polyclonal antibody was purified by Protein A affinity chromatography.

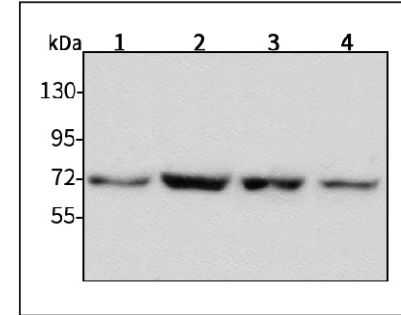
Anti-NF2/Merlin Rabbit pAb



WL00308

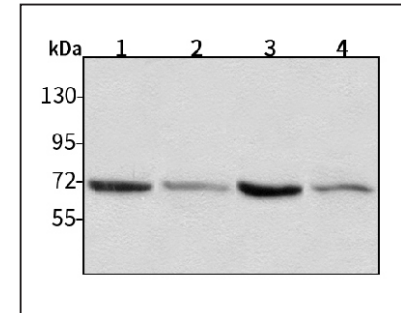
For Research Use Only. Not For Use In Diagnostic Procedures

Product Images



Western blot-Anti-NF2/Merlin pAb

Lane 1: Human HepG2 cell lysate
 Lane 2: Human HeLa cell lysate
 Lane 3: Human BGC-823 cell lysate
 Lane 4: Human MCF-7 cell lysate
 All lanes: Anti-NF2/Merlin at 1:1000 dilution
 Lysates/proteins at 20-50 µg per lane.
 Predicted band size: 70 kDa
 Observed band size: 70 kDa



Western blot-Anti-NF2/Merlin pAb

Lane 1: Mouse heart tissue lysate
 Lane 2: Mouse liver tissue lysate
 Lane 3: Rat brain tissue lysate
 Lane 4: Rat lung tissue lysate
 All lanes: Anti-NF2/Merlin at 1:1000 dilution
 Lysates/proteins at 20-50 µg per lane.
 Predicted band size: 70 kDa
 Observed band size: 70 kDa