

Anti-CD1a Rabbit pAb



WL04818

For Research Use Only. Not For Use In Diagnostic Procedures

Product Information

Product name	Anti-CD1a Rabbit pAb	
Source	Rabbit	
Species reactivity	Human, Mouse, Rat	
Tested applications	WB	1:1000-1:2000
Pack size	50/100/200/500/1000µl	
Storage	Store at -20°C. Avoid freeze/thaw cycles.	
Storage buffer	Supplied in 20 mM phosphate (pH 7.5), 150 mM NaCl, 100 µg/ml BSA, 50% glycerol and less than 0.02% sodium azide	

General Information

Background	Cd1a is an antigen-presenting protein that binds self and non-self lipid and glycolipid antigens and presents them to T-cell receptors on natural killer T-cells. During protein synthesis and maturation, CD1 family members bind endogenous lipids that are replaced by lipid or glycolipid antigens when the proteins are internalized and pass through endosomes, before trafficking back to the cell surface.
-------------------	--

Immunogen	Polyclonal antibody is produced by immunizing animals with a synthetic peptide of Cd1a .
------------------	--

Purification	Polyclonal antibody was purified by Protein A affinity chromatography.
---------------------	--

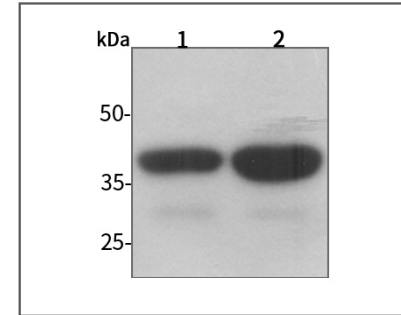
Anti-CD1a Rabbit pAb



WL04818

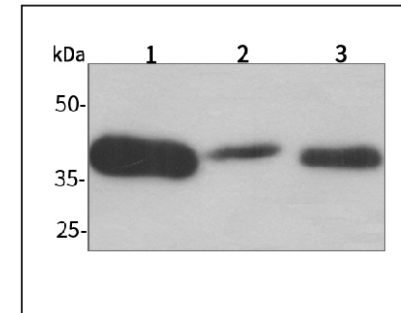
For Research Use Only. Not For Use In Diagnostic Procedures

Product Images



Western blot-Anti-CD1a pAb

Lane 1: Human Hela cell lysate
 Lane 2: Human MCF-7 cell lysate
 All lanes: Anti-CD1a at 1:1000 dilution
 Lysates/proteins at 20-50 µg per lane.
 Predicted band size: 37 kDa
 Observed band size: 37 kDa



Western blot-Anti-CD1a pAb

Lane 1: Mouse kidney tissue lysate
 Lane 2: Mouse heart tissue lysate
 Lane 3: Rat liver tissue lysate
 All lanes: Anti-CD1a at 1:1000 dilution
 Lysates/proteins at 20-50 µg per lane.
 Predicted band size: 37 kDa
 Observed band size: 37 kDa