

Anti-UCP2 Rabbit pAb



WL05162

For Research Use Only. Not For Use In Diagnostic Procedures

Product Information

Product name	Anti-UCP2 Rabbit pAb	
Source	Rabbit	
Species reactivity	Human, Mouse, Rat	
Tested applications	Western blot	1:500-1:1000
	<i>*Suggested working dilutions are given as a guide only. It is recommended that the user titrates the product for use in their own experiment using appropriate negative and positive controls.</i>	
Molecular Wt.	33 kDa	
Pack size	50/100/200/500/1000µl	
Storage	Store at -20°C. Avoid freeze/thaw cycles.	
Storage buffer	Supplied in 20 mM phosphate (pH 7.5), 150 mM NaCl, 100 µg/ml BSA, 50% glycerol and less than 0.02% sodium azide	

General Information

Background UCP2 (uncoupling protein 2) is a member of the mitochondrial carrier protein super family located in the mitochondrial inner membrane. UCPs separate oxidative phosphorylation from ATP synthesis with energy dissipated as heat, also referred to as the mitochondrial proton leak. UCPs facilitate the transfer of anions from the inner to the outer mitochondrial membrane and the return transfer of protons from the outer to the inner mitochondrial membrane. They also reduce the mitochondrial membrane potential in mammalian cells.

Immunogen Polyclonal antibody is produced by immunizing animals with a synthetic peptide of UCP2.

Purification Polyclonal antibody was purified by immunogen affinity chromatography.

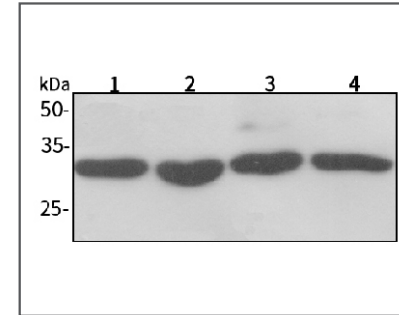
Anti-UCP2 Rabbit pAb



WL05162

For Research Use Only. Not For Use In Diagnostic Procedures

Product Images



Western blot-Anti-UCP2 pAb

Lane 1: Human HEK-293 cell lysate 20µg

Lane 2: Human HUVEC cell lysate 20µg

Lane 3: Human SW480 cell lysate 20µg

Lane 4: Human A549 cell lysate 20µg

Separation gel: 11% polyacrylamide

Electrophoresis: 100V, 4°C, 3h

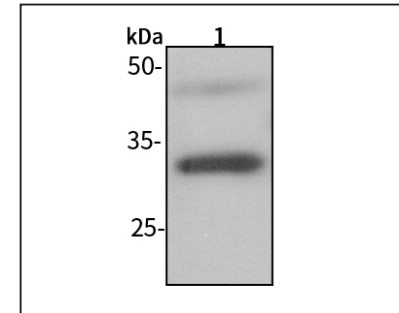
Transmembrane: 100V, 4°C, 1h

Blocking: 5% w/v nonfat dry milk, 1×TBST, at RT with gentle shaking

Primary antibody: 1:1000 in blocking buffer, 4°C, overnight

Secondary antibody (WLA023a) : 1:5000-1:10000, 45min

Detection: ECL, 30s-2min



Western blot-Anti-UCP2 pAb

Lane 1: Mouse liver tissue lysate 10µg

Separation gel: 11% polyacrylamide

Electrophoresis: 100V, 4°C, 3h

Transmembrane: 100V, 4°C, 1h

Blocking: 5% w/v nonfat dry milk, 1×TBST, at RT with gentle shaking

Primary antibody: 1:1000 in blocking buffer, 4°C, overnight

Secondary antibody (WLA023a) : 1:5000-1:10000, 45min

Detection: ECL, 30s-2min