

## Anti-Cytochrome c Rabbit pAb



WL02410

For Research Use Only. Not For Use In Diagnostic Procedures

## Product Information

<b>Product name</b>	Anti-Cytochrome c Rabbit pAb		
<b>Source</b>	Rabbit		
<b>Species reactivity</b>	Human, Mouse, Rat		
<b>Tested applications</b>	WB	1:1000-1:2000	
	IHC	1:100-1:200	
<b>Cellular localization</b>	Secreted and Cell membrane		
<b>Pack size</b>	50/100/200/500/1000µl		
<b>Storage</b>	Store at -20°C. <b>Avoid freeze/thaw cycles.</b>		
<b>Storage buffer</b>	Supplied in 20 mM phosphate (pH 7.5), 150 mM NaCl, 100 µg/ml BSA, 50% glycerol and less than 0.02% sodium azide		

## General Information

**Background** Cytochrome c is a small heme protein that functions as a central component of the electron transport chain in mitochondria. The encoded protein associates with the inner membrane of the mitochondrion where it accepts electrons from cytochrome b and transfers them to the cytochrome oxidase complex. This Cytochrome c is also involved in initiation of apoptosis. Mutations in this gene are associated with autosomal dominant nonsyndromic thrombocytopenia.

**Immunogen** Polyclonal antibody is produced by immunizing animals with a synthetic peptide of Cytochrome c.

**Purification** Polyclonal antibody was purified by Protein A affinity chromatography.

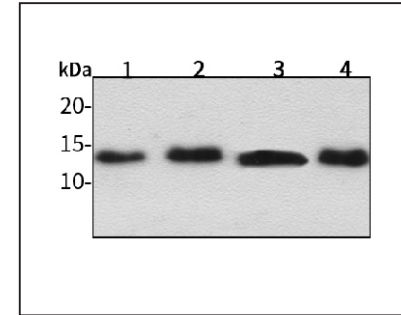
## Anti-Cytochrome c Rabbit pAb



WL02410

For Research Use Only. Not For Use In Diagnostic Procedures

## Product Images



## Western blot-Anti-Cytochrome c pAb

Lane 1: Human MGC-803 cell lysate

Lane 2: Human SGC-7901 cell lysate

Lane 3: Human MCF-7 cell lysate

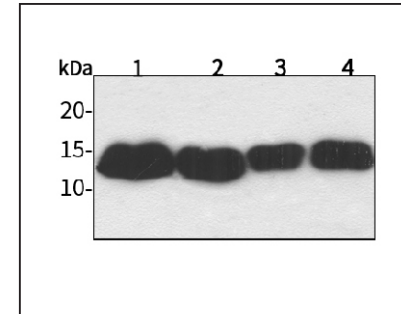
Lane 4: Human HEK-293 cell lysate 30µ

All lanes: Anti-Cytochrome c at 1:1000 dilution

Lysates/proteins at 20-50 µg per lane.

Predicted band size: 12 kDa

Observed band size: 12 kDa



## Western blot-Anti-Cytochrome c pAb

Lane 1: Mouse kidney tissue lysate

Lane 2: Mouse heart tissue lysate

Lane 3: Rat liver tissue lysate

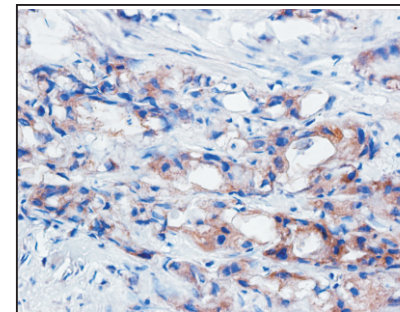
Lane 4: Rat brain tissue lysate

All lanes: Anti-Cytochrome c at 1:1000 dilution

Lysates/proteins at 20-50 µg per lane.

Predicted band size: 12 kDa

Observed band size: 12 kDa



## Immunohistochemistry-Anti-Cytochrome c pAb

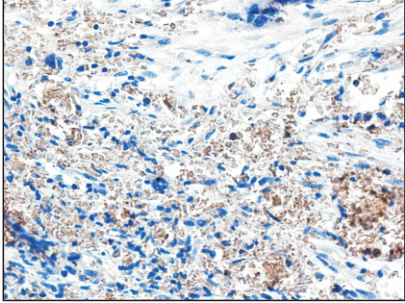
Immunohistochemical analysis of paraffin-embedded human breast cancer using anti-Cytochrome c Rabbit Antibody at 1:200 dilution. Perform heat mediated antigen retrieval with Tris-EDTA buffer pH 9.0

## Anti-Cytochrome c Rabbit pAb

WL02410

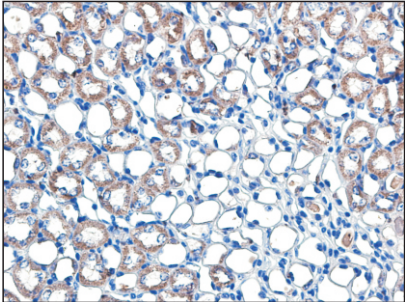
For Research Use Only. Not For Use In Diagnostic Procedures

### Product Information



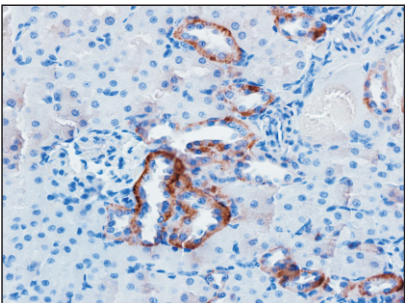
#### Immunohistochemistry-Anti-Cytochrome c pAb

Immunohistochemical analysis of paraffin-embedded human pancreatic cancer using anti-Cytochrome c Rabbit Antibody at 1:150 dilution.  
Perform heat mediated antigen retrieval with Tris-EDTA buffer pH 9.0



#### Immunohistochemistry-Anti-Cytochrome c pAb

Immunohistochemical analysis of paraffin-embedded human pancreatic cancer using anti-Cytochrome c Rabbit Antibody at 1:150 dilution.  
Perform heat mediated antigen retrieval with Tris-EDTA buffer pH 9.0



#### Immunohistochemistry-Anti-Cytochrome c pAb

Immunohistochemical analysis of paraffin-embedded rat kidney (LPS treated) using anti-Cytochrome c Rabbit Antibody at 1:200 dilution.  
Perform heat mediated antigen retrieval with Tris-EDTA buffer pH 9.0