

Anti-TRAM1 Rabbit pAb



WL05011

For Research Use Only. Not For Use In Diagnostic Procedures

Product Information

Product name	Anti-TRAM1 Rabbit pAb	
Source	Rabbit	
Species reactivity	Human, Mouse, Rat	
Tested applications	Western blot	1:500-1:1000
	<i>*Suggested working dilutions are given as a guide only. It is recommended that the user titrates the product for use in their own experiment using appropriate negative and positive controls.</i>	
Molecular Wt.	43 kDa	
Pack size	50/100/200/500/1000µl	
Storage	Store at -20°C. Avoid freeze/thaw cycles.	
Storage buffer	Supplied in 20 mM phosphate (pH 7.5), 150 mM NaCl, 100 µg/ml BSA, 50% glycerol and less than 0.02% sodium azide	

General Information

Background The protein influences glycosylation and facilitates the translocation of secretory proteins across the endoplasmic reticulum membrane by regulating which domains of the nascent polypeptide chain are visible to the cytosol during a translocational pause.

Immunogen Polyclonal antibody is produced by immunizing animals with a synthetic peptide of TRAM1.

Purification Polyclonal antibody was purified immunogen affinity chromatography.

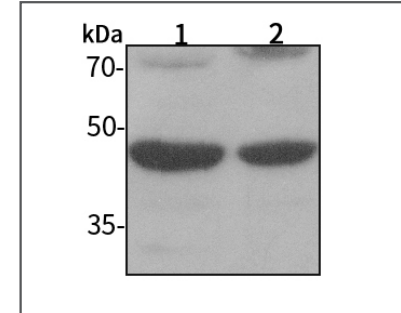
Anti-TRAM1 Rabbit pAb



WL05011

For Research Use Only. Not For Use In Diagnostic Procedures

Product Images



Western blot-Anti-TRAM1 pAb

Lane 1: Human HUVEC cell lysate 20µg

Lane 2: Human SW480 cell lysate 20µg

Separation gel: 11% polyacrylamide

Electrophoresis: 100V, 4°C, 3h

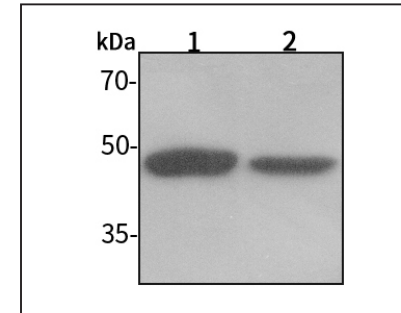
Transmembrane: 100V, 4°C, 1.5-2h

Blocking: 5% w/v nonfat dry milk, 1×TBST, at RT with gentle shaking

Primary antibody: 1:1000 in blocking buffer, 4°C, overnight

Secondary antibody-HRP: 1:5000-1:10000 in blocking buffer, RT, 45min

Detection: ECL, 30s-2min



Western blot-Anti-TRAM1 pAb

Lane 1: Mouse colon tissue lysate 20µg

Lane 2: Rat stomach tissue lysate 20µg

Separation gel: 11% polyacrylamide

Electrophoresis: 100V, 4°C, 3h

Transmembrane: 100V, 4°C, 1.5-2h

Blocking: 5% w/v nonfat dry milk, 1×TBST, at RT with gentle shaking

Primary antibody: 1:1000 in blocking buffer, 4°C, overnight

Secondary antibody-HRP: 1:5000-1:10000 in blocking buffer, RT, 45min

Detection: ECL, 30s-2min