

Anti-PI3 Kinase p110 $\beta$  Rabbit pAb

WL03380

For Research Use Only. Not For Use In Diagnostic Procedures

## Product Information

<b>Product name</b>	Anti-PI3 Kinase p110 $\beta$ Rabbit pAb	
<b>Source</b>	Rabbit	
<b>Species reactivity</b>	Human, Mouse, Rat	
<b>Tested applications</b>	WB	1:1000-1:2000
	IHC	1:500
	IF	1:500
<b>Cellular localization</b>	Secreted and Cell membrane	
<b>Pack size</b>	50/100/200/500/1000 $\mu$ l	
<b>Storage</b>	Store at -20°C. <b>Avoid freeze/thaw cycles.</b>	
<b>Storage buffer</b>	Supplied in 20 mM phosphate (pH 7.5), 150 mM NaCl, 100 $\mu$ g/ml	
	BSA, 50% glycerol and less than 0.02% sodium azide	

## General Information

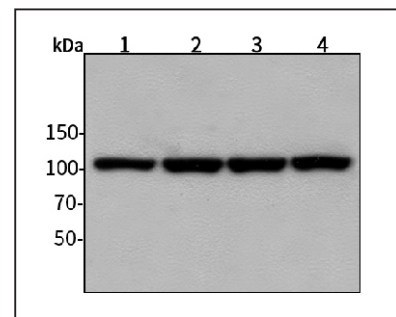
<b>Background</b>	Phosphatidylinositol 3-kinase (PI 3-kinase) is composed of p85 and p110 subunits. p85 lacks PI 3-kinase activity and acts as an adapter, coupling p110 to activated protein tyrosine kinase. Various isoforms of the catalytic subunit (p110 $\alpha$ , p110 $\beta$ , p110 $\gamma$ , and p110 $\delta$ ) have been isolated, and the regulatory subunits that associate with p110 $\alpha$ , p110 $\beta$ , and p110 $\delta$ are p85 $\alpha$ and p85 $\beta$ . In contrast, p110 $\gamma$ associates with a p101 regulatory subunit that is unrelated to p85. Furthermore, p110 $\gamma$ is activated by $\beta\gamma$ subunits of heterotrimeric G proteins.
<b>Immunogen</b>	Polyclonal antibody is produced by immunizing animals with a synthetic peptide of PI3 Kinase p110 $\beta$ .
<b>Purification</b>	Polyclonal antibody was purified by Protein A affinity chromatography.

Anti-PI3 Kinase p110 $\beta$  Rabbit pAb

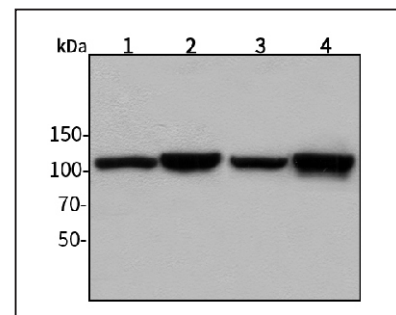
WL03380

For Research Use Only. Not For Use In Diagnostic Procedures

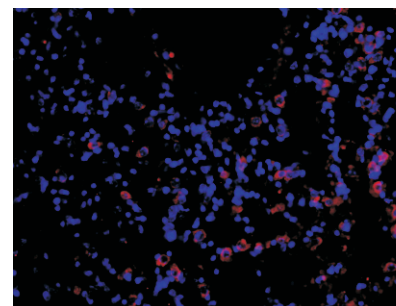
## Product Images

Western blot-Anti-PI3 Kinase p110 $\beta$  pAb

Lane 1: Human HepG2 cell lysate  
 Lane 2: Human Hela cell lysate  
 Lane 3: Human BGC-823 cell lysate  
 Lane 4: Human MGC-803 cell lysate  
 All lanes: Anti-PI3 Kinase p110 $\beta$  at 1:1000 dilution  
 Lysates/proteins at 20-50  $\mu$ g per lane.  
 Predicted band size: 123 kDa  
 Observed band size: 110 kDa

Western blot-Anti-PI3 Kinase p110 $\beta$  pAb

Lane 1: Mouse kidney tissue lysate  
 Lane 2: Mouse heart tissue lysate  
 Lane 3: Rat lung tissue lysate  
 Lane 4: Rat colon tissue lysate  
 All lanes: Anti-PI3 Kinase p110 $\beta$  at 1:1000 dilution  
 Lysates/proteins at 20-50  $\mu$ g per lane.  
 Predicted band size: 123 kDa  
 Observed band size: 110 kDa

Immunofluorescence-Anti-PI3 Kinase p110 $\beta$  pAb

Immunofluorescence analysis of paraffin-embedded mouse lung using anti-PI3 Kinase p110 $\beta$  Rabbit Antibody at 1:500 dilution.  
 Perform heat mediated antigen retrieval with Tris-EDTA buffer pH 9.0