

Anti-CD16b Rabbit pAb



WL04823

For Research Use Only. Not For Use In Diagnostic Procedures

Product Information

Product name	Anti-CD16b Rabbit pAb	
Source	Rabbit	
Species reactivity	Human, Mouse, Rat	
Tested applications	WB	1:1000-1:2000
Pack size	50/100/200/500/1000µl	
Storage	Store at -20°C. Avoid freeze/thaw cycles.	
Storage buffer	Supplied in 20 mM phosphate (pH 7.5), 150 mM NaCl, 100 µg/ml BSA, 50% glycerol and less than 0.02% sodium azide	

General Information

Background	Cd16 is a low affinity receptor for the Fc region of gamma immunoglobulins (IgG). Receptor found on the surface of natural killer cells, neutrophil polymorphonuclear leukocytes, monocytes and macrophages. CD16 mediates antibody-dependent cellular cytotoxicity (ADCC) and other antibody-dependent responses, such as phagocytosis.
-------------------	--

Immunogen	Polyclonal antibody is produced by immunizing animals with a synthetic peptide of Cd16b.
------------------	--

Purification	Polyclonal antibody was purified by Protein A affinity chromatography.
---------------------	--

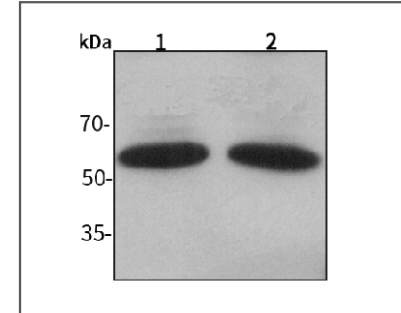
Anti-CD16b Rabbit pAb



WL04823

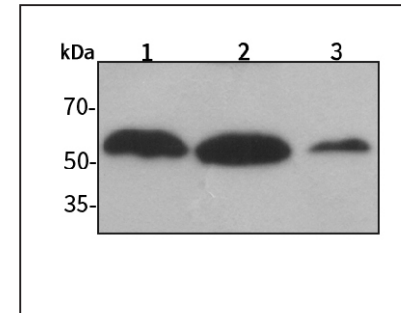
For Research Use Only. Not For Use In Diagnostic Procedures

Product Images



Western blot-Anti-CD16b pAb

Lane 1: Human HUVEC cell lysate
 Lane 2: Human SW480 cell lysate
 All lanes: Anti-CD16b at 1:1000 dilution
 Lysates/proteins at 20-50 µg per lane.
 Predicted band size: 29 kDa
 Observed band size: 50-70 kDa



Western blot-Anti-CD16b pAb

Lane 1: Mouse kidney tissue lysate
 Lane 2: Mouse heart tissue lysate
 Lane 3: Rat lung tissue lysate
 All lanes: Anti-CD16b at 1:1000 dilution
 Lysates/proteins at 20-50 µg per lane.
 Predicted band size: 29 kDa
 Observed band size: 50-70 kDa