

## Anti-MAP-2 Rabbit pAb



WL04217

For Research Use Only. Not For Use In Diagnostic Procedures

## Product Information

<b>Product name</b>	Anti-MAP-2 Rabbit pAb	
<b>Source</b>	Rabbit	
<b>Species reactivity</b>	Human, Mouse, Rat	
<b>Tested applications</b>	WB	1:500-1:1000
<b>Pack size</b>	50/100/200/500/1000µl	
<b>Storage</b>	Store at -20°C. <b>Avoid freeze/thaw cycles.</b>	
<b>Storage buffer</b>	Supplied in 20 mM phosphate (pH 7.5), 150 mM NaCl, 100 µg/ml BSA, 50% glycerol and less than 0.02% sodium azide	

## General Information

## Background

Microtubule-associated protein 2 (MAP2) is a neuronal phosphoprotein that regulates the structure and stability of microtubules, neuronal morphogenesis, cytoskeleton dynamics, and organelle trafficking in axons and dendrites. MAP2 binds in a cooperative manner, with many MAP2 proteins binding a single microtubule to promote stabilization. Multiple MAP2 isoforms are expressed in neurons, including high molecular weight MAP2A and MAP2B, and low molecular weight MAP2C and MAP2D. . The suppression of microtubule dynamic instability by the MAP proteins is thought to be associated with phosphorylation of the MAPs.

## Immunogen

Polyclonal antibody is produced by immunizing animals with a synthetic peptide of MAP-2.

## Purification

Polyclonal antibody was purified by immunogen affinity chromatography.

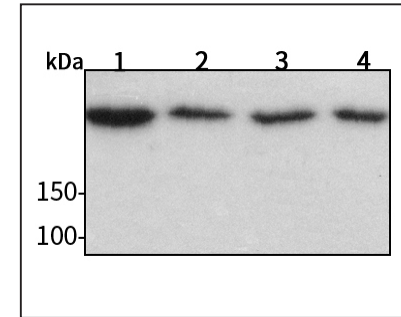
## Anti-MAP-2 Rabbit pAb



WL04217

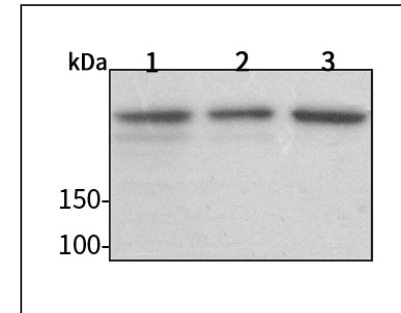
For Research Use Only. Not For Use In Diagnostic Procedures

## Product Images



## Western blot-Anti-MAP-2 pAb

Lane 1: Human HeLa cell lysate  
 Lane 2: Human MCF-7 cell lysate  
 Lane 3: Human HEK-293 cell lysate  
 Lane 4: Human A549 cell lysate  
 All lanes: Anti-MAP-2 at 1:1000 dilution  
 Lysates/proteins at 20-50 µg per lane.  
 Predicted band size: 280 kDa  
 Observed band size: 280 kDa



## Western blot-Anti-MAP-2 pAb

Lane 1: Mouse heart tissue lysate  
 Lane 2: Rat lung tissue lysate  
 Lane 3: Rat stomach tissue lysate  
 All lanes: Anti-MAP-2 at 1:1000 dilution  
 Lysates/proteins at 20-50 µg per lane.  
 Predicted band size: 280 kDa  
 Observed band size: 280 kDa