

Anti-LDH Rabbit pAb



WL03271

For Research Use Only. Not For Use In Diagnostic Procedures

Product Information

Product name	Anti-LDH Rabbit pAb		
Source	Rabbit		
Species reactivity	Human, Mouse, Rat		
Tested applications	WB	1:500-1:1000	
Pack size	50/100/200/500/1000µl		
Storage	Store at -20°C. Avoid freeze/thaw cycles.		
Storage buffer	Supplied in 20 mM phosphate (pH 7.5), 150 mM NaCl, 100 µg/ml BSA, 50% glycerol and less than 0.02% sodium azide		

General Information

Background

Lactate dehydrogenase (LDH) catalyzes the interconversion of pyruvate and NADH to lactate and NAD⁺. When the oxygen supply is too low for mitochondrial ATP production, this reaction recycles NADH generated in glycolysis to NAD⁺, which reenters glycolysis. The LDH family consists of three members, LDH-A, LDH-B and LDH-C, all of which form tetramers consisting of four subunits. LDHs function as powerful markers for germ cell tumors. When oxygen levels return to normal, LDH converts lactate to pyruvate to generate ATP in the mitochondrial electron transport chain.

Immunogen

Polyclonal antibody is produced by immunizing animals with a synthetic peptide of LDH.

Purification

Polyclonal antibody was purified by immunogen affinity chromatography.

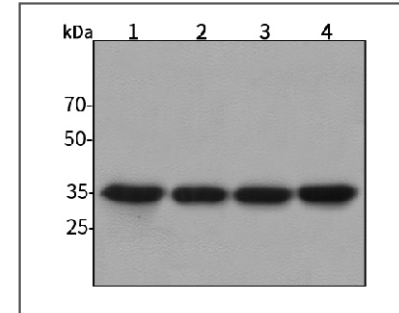
Anti-LDH Rabbit pAb



WL03271

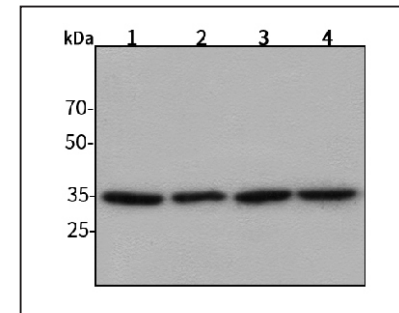
For Research Use Only. Not For Use In Diagnostic Procedures

Product Images



Western blot-Anti-LDH pAb

Lane 1: Human HepG2 cell lysate
Lane 2: Human Hela cell lysate
Lane 3: Human BGC-823 cell lysate
Lane 4: Human MGC-803 cell lysate
All lanes: Anti-LDH at 1:1000 dilution
 Lysates/proteins at 20-50 µg per lane.
 Predicted band size: 37 kDa
 Observed band size: 35 kDa



Western blot-Anti-LDH pAb

Lane 1: Mouse kidney tissue lysate
Lane 2: Mouse heart tissue lysate
Lane 3: Rat liver tissue lysate
Lane 4: Rat brain tissue lysate
All lanes: Anti-LDH at 1:1000 dilution
 Lysates/proteins at 20-50 µg per lane.
 Predicted band size: 37 kDa
 Observed band size: 35 kDa