

## Anti-SERCA2 Rabbit pAb



WL00957

For Research Use Only. Not For Use In Diagnostic Procedures

## Product Information

<b>Product name</b>	Anti-SERCA2 Rabbit pAb
<b>Source</b>	Rabbit
<b>Species reactivity</b>	Human
<b>Tested applications</b>	WB 1:500-1:1000
<b>Pack size</b>	50/100/200/500/1000µl
<b>Storage</b>	Store at -20°C. <b>Avoid freeze/thaw cycles.</b>
<b>Storage buffer</b>	Supplied in 20 mM phosphate (pH 7.5), 150 mM NaCl, 100 µg/ml BSA, 50% glycerol and less than 0.02% sodium azide

## General Information

<b>Background</b>	The ATP2A2 (SERCA2) calcium pump is one of several sarcoplasmic and endoplasmic reticulum Ca <sup>2+</sup> -ATPases responsible for regulating calcium transport across intracellular membranes. This enzyme catalyzes the hydrolysis of ATP coupled with the translocation of calcium from the cytosol into the sarcoplasmic reticulum lumen, and is involved in regulation of the contraction/relaxation cycle. Mutation in the corresponding ATP2A2 (SERCA2) gene results in Darier disease, a skin disorder characterized by the presence of dark, keratotic papules or rash found on the head and torso.
<b>Immunogen</b>	Polyclonal antibody is produced by immunizing animals with a synthetic peptide of SERCA2.
<b>Purification</b>	Polyclonal antibody was purified by immunogen affinity chromatography.

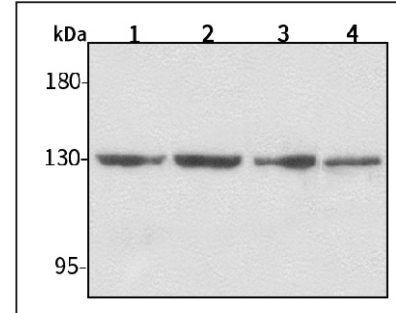
## Anti-SERCA2 Rabbit pAb



WL00957

For Research Use Only. Not For Use In Diagnostic Procedures

## Product Images



Western blot-Anti-SERCA2 pAb

Lane 1: Human HepG2 cell lysate  
 Lane 2: Human Hela cell lysate  
 Lane 3: Human BGC-823 cell lysate  
 Lane 4: Human MGC-803 cell lysate  
 All lanes: Anti-SERCA2 at 1:1000 dilution  
 Lysates/proteins at 20-50 µg per lane.  
 Predicted band size: 115 kDa  
 Observed band size: 130 kDa