

## Anti-Inhibin alpha Rabbit pAb



WL04690

For Research Use Only. Not For Use In Diagnostic Procedures

## Product Information

<b>Product name</b>	Anti-Inhibin alpha Rabbit pAb		
<b>Source</b>	Rabbit		
<b>Species reactivity</b>	Human, Mouse, Rat		
<b>Tested applications</b>	Western blot	1:500-1:1000	
	<i>*Suggested working dilutions are given as a guide only. It is recommended that the user titrates the product for use in their own experiment using appropriate negative and positive controls.</i>		
<b>Molecular Wt.</b>	Predicted band size: 40 kDa		
	Observed band size: 50 kDa		
<b>Pack size</b>	50/100/200/500/1000µl		
<b>Storage</b>	Store at -20°C. <b>Avoid freeze/thaw cycles.</b>		
<b>Storage buffer</b>	Supplied in 20 mM phosphate (pH 7.5), 150 mM NaCl, 100 µg/ml BSA, 50% glycerol and less than 0.02% sodium azide		

## General Information

**Background**

Inhibin is a gonadal protein that preferentially suppresses the secretion of pituitary follicle-stimulating hormone (FSH). Proteolytically processed to generate multiple peptide products, including the alpha subunit of the inhibin A and B protein complexes. Ovarian follicular fluid and characterized as a disulphide-linked dimeric glycoprotein, inhibin belongs to the transforming growth factor  $\beta$  (TGF $\beta$ ) superfamily of growth and differentiation factors. TGF $\beta$  proteins affect a range of tissues and systems beyond their role in reproduction. .

**Immunogen**

Polyclonal antibody is produced by immunizing animals with a synthetic peptide of Inhibin alpha.

**Purification**

Polyclonal antibody was purified by immunogen affinity chromatography.

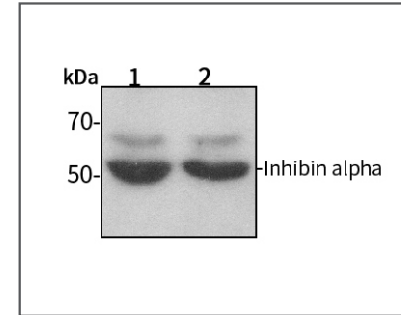
## Anti-Inhibin alpha Rabbit pAb



WL04690

For Research Use Only. Not For Use In Diagnostic Procedures

## Product Images



## Western blot-Anti-Inhibin alpha pAb

Lane 1: Human A549 cell lysate 30µg

Lane 2: Human HUVEC cell lysate 30µg

Separation gel: 10% polyacrylamide

Electrophoresis: 100V, 4°C, 3h

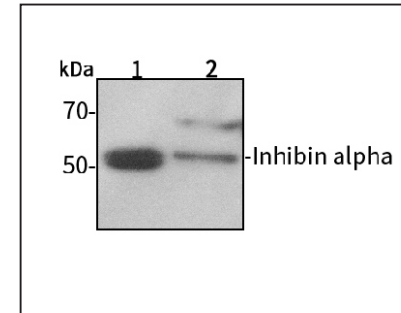
Transmembrane: 100V, 4°C, 1h

Blocking: 5% w/v nonfat dry milk, 1×TBST, at RT with gentle shaking

Primary antibody: 1:1000 in blocking buffer, 4°C, overnight

Secondary antibody (WLA023a) : 1:5000-1:10000, 45min

Detection: ECL, 30s-2min



## Western blot-Anti-Inhibin alpha pAb

Lane 1: Rat colon tissue lysate 30µg

Lane 2: Rat stomach tissue lysate 30µg

Separation gel: 10% polyacrylamide

Electrophoresis: 100V, 4°C, 3h

Transmembrane: 100V, 4°C, 1h

Blocking: 5% w/v nonfat dry milk, 1×TBST, at RT with gentle shaking

Primary antibody: 1:1000 in blocking buffer, 4°C, overnight

Secondary antibody (WLA023a) : 1:5000-1:10000, 45min

Detection: ECL, 30s-2min