

Anti-Src Rabbit pAb



WL01570

For Research Use Only. Not For Use In Diagnostic Procedures

Product Information

Product name	Anti-Src Rabbit pAb	
Source	Rabbit	
Species reactivity	Human, Mouse, Rat	
Tested applications	Western blot	1:500-1:1000
	Immunohistochemistry	1:150
	<i>*Suggested working dilutions are given as a guide only. It is recommended that the user titrates the product for use in their own experiment using appropriate negative and positive controls.</i>	
Molecular Wt.	60 kDa	
Pack size	50/100/200/500/1000µl	
Storage	Store at -20°C. Avoid freeze/thaw cycles.	
Storage buffer	Supplied in 20 mM phosphate (pH 7.5), 150 mM NaCl, 100 µg/ml BSA, 50% glycerol and less than 0.02% sodium azide	

General Information

Background	The Src family of protein tyrosine kinases, which includes Src, Lyn, Fyn, Yes, Lck, Blk, and Hck, are important in the regulation of growth and differentiation of eukaryotic cells. It is a protein tyrosine kinase known to regulate cellular adhesion. Src activity is regulated by tyrosine phosphorylation at two sites, but with opposing effects. While phosphorylation at Tyr416 in the activation loop of the kinase domain upregulates enzyme activity, phosphorylation at Tyr527 in the carboxy-terminal tail by Csk renders the enzyme less active. Several cancers including colon and breast cancer have been associated with an increase of Src activity.
Immunogen	Polyclonal antibody is produced by immunizing animals with a synthetic peptide of Src.
Purification	Polyclonal antibody was purified by immunogen affinity chromatography.

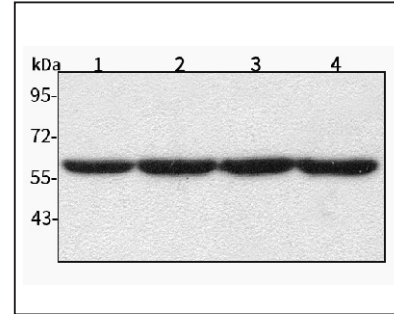
Anti-Src Rabbit pAb



WL01570

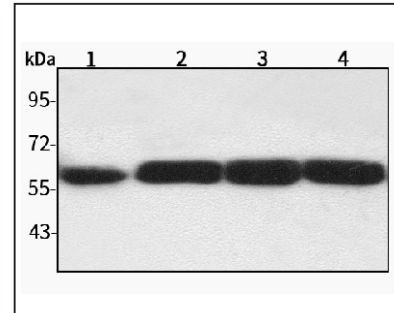
For Research Use Only. Not For Use In Diagnostic Procedures

Product Images



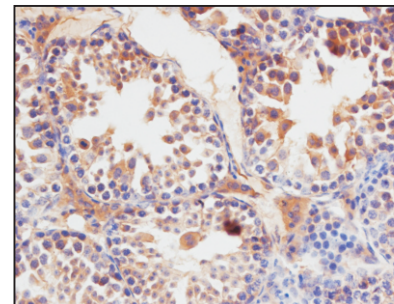
Western blot-Anti-Src pAb

Lane 1: Human BGC-823 cell lysate 24µg
 Lane 2: Human MGC-803 cell lysate 24µg
 Lane 3: Human SGC-7901 cell lysate 24µg
 Lane 4: Human MCF-7 cell lysate 24µg
 Separation gel: 8% polyacrylamide
 Electrophoresis: 100V, 4°C, 3h
 Transmembrane: 100V, 4°C, 1h
 Blocking: 5% w/v nonfat dry milk, 1×TBST, at RT with gentle shaking
 Primary antibody: 1:1000 in blocking buffer, 4°C, overnight
 Visualization: ECL



Western blot-Anti-Src pAb

Lane 1: Mouse lung tissue lysate 20µg
 Lane 2: Mouse brain tissue lysate 20µg
 Lane 3: Rat cerebellum tissue lysate 20µg
 Lane 4: Rat ridge tissue lysate 20µg
 Separation gel: 8% polyacrylamide
 Electrophoresis: 100V, 4°C, 3h
 Transmembrane: 100V, 4°C, 1h
 Blocking: 5% w/v nonfat dry milk, 1×TBST, at RT with gentle shaking
 Primary antibody: 1:1000 in blocking buffer, 4°C, overnight
 Visualization: ECL



Immunohistochemistry-Anti-Src pAb

Sample: Mouse testicle tissue
 Antigen retrieval: pH 9.0 Tris-EDTA buffer
 Primary antibody: 1:150, 4°C, overnight
 Secondary antibody-Biotin: 1:150, 37°C, 1h
 Streptavidin-HRP: 1:200, 37°C, 30min
 Visualization: DAB

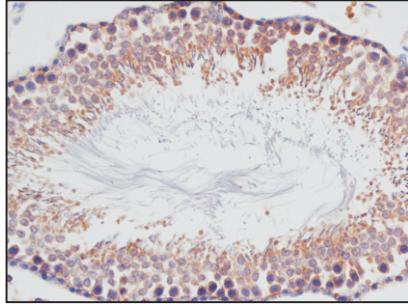
Anti-Src Rabbit pAb



WL01570

For Research Use Only. Not For Use In Diagnostic Procedures

Product Information



Immunohistochemistry-Anti-Src pAb

Sample: Rat testicle tissue

Antigen retrieval: pH 9.0 Tris-EDTA buffer

Primary antibody: 1:150, 4°C, overnight

Secondary antibody-Biotin: 1:150, 37°C, 1h

Streptavidin-HRP: 1:200, 37°C, 30min

Visualization: DAB