

Anti-Islet 1 Rabbit pAb



WL04897

For Research Use Only. Not For Use In Diagnostic Procedures

Product Information

Product name	Anti-Islet 1 Rabbit pAb	
Source	Rabbit	
Species reactivity	Human	
Tested applications	WB	1:500-1:1000
Pack size	50/100/200/500/1000µl	
Storage	Store at -20°C. Avoid freeze/thaw cycles.	
Storage buffer	Supplied in 20 mM phosphate (pH 7.5), 150 mM NaCl, 100 µg/ml BSA, 50% glycerol and less than 0.02% sodium azide	

General Information

Background ISL1 belongs to the LIM homeodomain transcription factor family that binds to the enhancer region of the INS gene. lacking ISL1 expression results in growth arrest or displays profound defects in heart development, including atria, ventricle, and the inflow and outflow tracts.

Immunogen Polyclonal antibody is produced by immunizing animals with a synthetic peptide of Islet 1.

Purification Polyclonal antibody was purified by immunogen affinity chromatography.

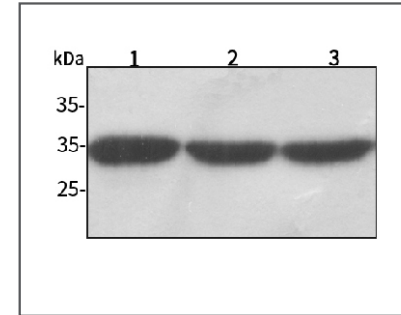
Anti-Islet 1 Rabbit pAb



WL04897

For Research Use Only. Not For Use In Diagnostic Procedures

Product Images



Western blot-Anti-Islet 1 pAb

Lane 1: Human HeLa cell lysate

Lane 2: Human MCF-7 cell lysate

Lane 3: Human HEK-293 cell lysate

All lanes: Anti-Islet 1 at 1:1000 dilution

Lysates/proteins at 20-50 µg per lane.

Predicted band size: 39 kDa

Observed band size: 35 kDa