

Anti-BRG1 Rabbit pAb



WL03997

For Research Use Only. Not For Use In Diagnostic Procedures

Product Information

Product name	Anti-BRG1 Rabbit pAb		
Source	Rabbit		
Species reactivity	Human, Mouse, Rat		
Tested applications	WB	1:1000-1:2000	
Pack size	50/100/200/500/1000µl		
Storage	Store at -20°C. Avoid freeze/thaw cycles.		
Storage buffer	Supplied in 20 mM phosphate (pH 7.5), 150 mM NaCl, 100 µg/ml BSA, 50% glycerol and less than 0.02% sodium azide		

General Information

Background

BRG1 is a member of the SWI/SNF family of proteins and is similar to the brahma protein of *Drosophila*. Members of this family have helicase and ATPase activities and are thought to regulate transcription of certain genes by altering the chromatin structure around those genes. BRG1 is part of the large ATP-dependent chromatin remodeling complex SNF/SWI, which is required for transcriptional activation of genes normally repressed by chromatin. BRG1 plays a vital role in the regulation of gene transcription during early mammalian embryogenesis. In addition, BRG1 also play a role as a tumor suppressors and BRG1 is mutated in several tumor cell lines.

Immunogen

Polyclonal antibody is produced by immunizing animals with a synthetic peptide of BRG1.

Purification

Polyclonal antibody was purified by protein A affinity chromatography.

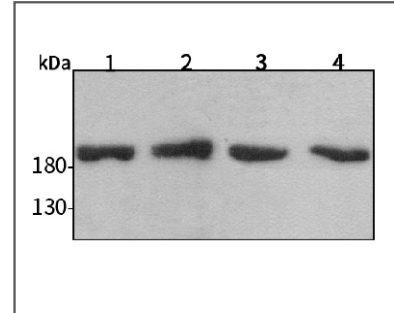
Anti-BRG1 Rabbit pAb



WL03997

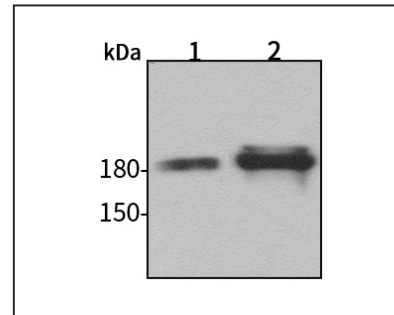
For Research Use Only. Not For Use In Diagnostic Procedures

Product Images



Western blot-Anti-BRG1 pAb

Lane 1: Human HeLa cell lysate
 Lane 2: Human MCF-7 cell lysate
 Lane 3: Human HEK-293 cell lysate
 Lane 4: Human SW480 cell lysate
 All lanes: Anti-BRG1 at 1:1000 dilution
 Lysates/proteins at 20-50 µg per lane.
 Predicted band size: 185 kDa
 Observed band size: 185 kDa



Western blot-Anti-BRG1 pAb

Lane 1: Mouse kidney tissue lysate
 Lane 2: Rat colon tissue lysate
 All lanes: Anti-BRG1 at 1:1000 dilution
 Lysates/proteins at 20-50 µg per lane.
 Predicted band size: 185 kDa
 Observed band size: 185 kDa