

Anti-Integrin β 1 Rabbit pAb

WL01615

For Research Use Only. Not For Use In Diagnostic Procedures

Product Information

Product name	Anti-Integrin β 1 Rabbit pAb	
Source	Rabbit	
Species reactivity	Human, Mouse, Rat	
Tested applications	Western blot	1:1000-1:2000
	<i>*Suggested working dilutions are given as a guide only. It is recommended that the user titrates the product for use in their own experiment using appropriate negative and positive controls.</i>	
Molecular Wt.	88 kDa	
Pack size	50/100/200/500/1000 μ l	
Storage	Store at -20°C. Avoid freeze/thaw cycles.	
Storage buffer	Supplied in 20 mM phosphate (pH 7.5), 150 mM NaCl, 100 μ g/ml BSA, 50% glycerol and less than 0.02% sodium azide	

General Information

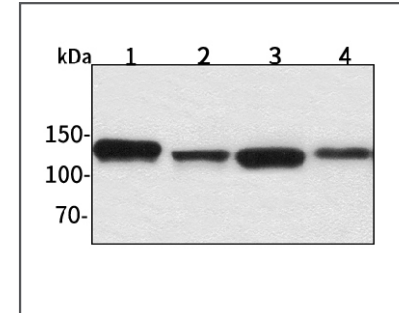
Background	Integrins are heterodimeric proteins made up of alpha and beta subunits. The 16 a and 8 b subunits heterodimerize to produce more than 20 different receptors. Most integrin receptors bind ligands that are components of the extracellular matrix, including Fibronectin, collagen and vitronectin. Integrin family members are membrane receptors involved in cell adhesion and recognition in a variety of processes including embryogenesis, hemostasis, tissue repair, immune response and metastatic diffusion of tumor cells.
Immunogen	Polyclonal antibody is produced by immunizing animals with a synthetic peptide of Integrin β 1.
Purification	Polyclonal antibody was purified by Protein A affinity chromatography.

Anti-Integrin β 1 Rabbit pAb

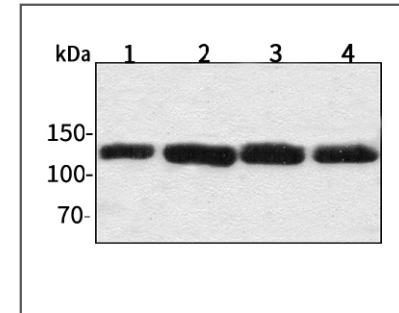
WL01615

For Research Use Only. Not For Use In Diagnostic Procedures

Product Images

Western blot-Anti-Integrin β 1 pAb

Lane 1: Human HeLa cell lysate 30 μ g
 Lane 2: Human BGC-823 cell lysate 30 μ g
 Lane 3: Human MGC-803 cell lysate 30 μ g
 Lane 4: Human SGC-7901 cell lysate 30 μ g
 Separation gel: 8% polyacrylamide
 Electrophoresis: 100V, 4°C, 3h
 Transmembrane: 100V, 4°C, 1h
 Blocking: 5% w/v nonfat dry milk, 1 \times TBST, at RT with gentle shaking
 Primary antibody: 1:1000 in blocking buffer, 4°C, overnight
 Secondary antibody (WLA023a) : 1:5000-1:8000, 45min
 Detection: ECL, 30s-2min

Western blot-Anti-Integrin β 1 pAb

Lane 1: Mouse heart tissue lysate 30 μ g
 Lane 2: Mouse kidney tissue lysate 30 μ g
 Lane 3: Rat brain tissue lysate 30 μ g
 Lane 4: Rat testicle tissue lysate 30 μ g
 Separation gel: 8% polyacrylamide
 Electrophoresis: 100V, 4°C, 3h
 Transmembrane: 100V, 4°C, 1h
 Blocking: 5% w/v nonfat dry milk, 1 \times TBST, at RT with gentle shaking
 Primary antibody: 1:1000 in blocking buffer, 4°C, overnight
 Secondary antibody (WLA023a) : 1:5000-1:8000, 45min
 Detection: ECL, 30s-2min