

## Anti-NRF2 Rabbit pAb



WLH3846

For Research Use Only. Not For Use In Diagnostic Procedures

## Product Information

|                              |   |
|------------------------------|---|
| <b>Product name</b>          | Anti-NRF2 Rabbit pAb  |
| <b>Source</b>                | Rabbit  |
| <b>Species reactivity</b>    | Human, Mouse, Rat   |
| <b>Tested applications</b>   | IF 1:100-1:400  |
| <b>Cellular localization</b> | Secreted and Cell membrane  |
| <b>Pack size</b>             | 50/100/200/500/1000μl   |
| <b>Storage</b>               | Store at -20°C. <b>Avoid freeze/thaw cycles.</b>  |
| <b>Storage buffer</b>        | Supplied in 20 mM phosphate (pH 7.5), 150 mM NaCl, 100 μg/ml BSA, 50% glycerol and less than 0.02% sodium azide |

## General Information

|                     |   |
|---------------------|---|
| <b>Background</b>   | The nuclear factor-like 2 (Nrf2) transcriptional activator binds antioxidant response elements (ARE) of target gene promoter regions to regulate expression of oxidative stress response genes. Under basal conditions, the Nrf2 inhibitor IκNrf2 (also called KEAP1) binds and retains Nrf2 in the cytoplasm where it can be targeted for ubiquitin-mediated degradation. Following oxidative or electrophilic stress, KEAP1 releases Nrf2, thereby allowing the activator to translocate to the nucleus and bind to ARE-containing genes. Altered expression of Nrf2 is associated with chronic obstructive pulmonary disease (COPD). |
| <b>Immunogen</b>    | Polyclonal antibody is produced by immunizing animals with recombinant protein of NRF2.   |
| <b>Purification</b> | Polyclonal antibody was purified by protein A affinity chromatography.  |

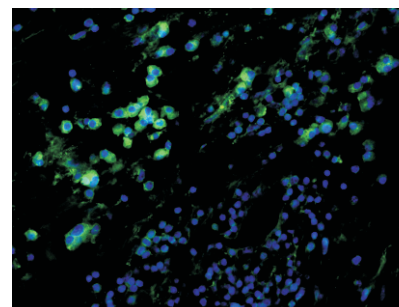
## Anti-NRF2 Rabbit pAb



WLH3846

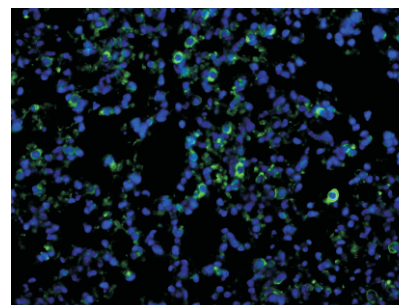
For Research Use Only. Not For Use In Diagnostic Procedures

## Product Images



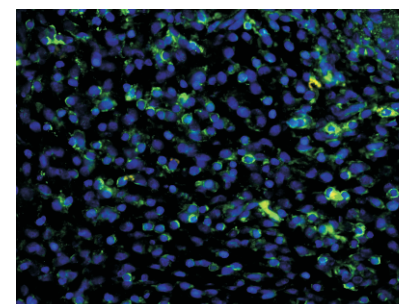
## Immunofluorescence-Anti-NRF2 pAb

Immunofluorescence analysis of paraffin-embedded human kidney using anti-NRF2 Rabbit Antibody at 1:200 dilution.  
Perform heat mediated antigen retrieval with Tris-EDTA buffer pH 9.0



## Immunofluorescence-Anti-NRF2 pAb

Immunofluorescence analysis of paraffin-embedded mouse lung using anti-NRF2 Rabbit Antibody at 1:200 dilution.  
Perform heat mediated antigen retrieval with Tris-EDTA buffer pH 9.0



## Immunofluorescence-Anti-NRF2 pAb

Immunofluorescence analysis of paraffin-embedded rat uterus using anti-NRF2 Rabbit Antibody at 1:200 dilution.  
Perform heat mediated antigen retrieval with Tris-EDTA buffer pH 9.0