

Anti-Parathyroid Hormone Rabbit pAb



WL02861

For Research Use Only. Not For Use In Diagnostic Procedures

Product Information

| | | | |
|------------------------------|---|--------------|--|
| Product name | Anti-Parathyroid Hormone Rabbit pAb | | |
| Source | Rabbit | | |
| Species reactivity | Human, Mouse, Rat | | |
| Tested applications | WB | 1:500-1:1000 | |
| | IF | 1:500 | |
| Cellular localization | Secreted and Cell membrane | | |
| Pack size | 50/100/200/500/1000µl | | |
| Storage | Store at -20°C. Avoid freeze/thaw cycles. | | |
| Storage buffer | Supplied in 20 mM phosphate (pH 7.5), 150 mM NaCl, 100 µg/ml BSA, 50% glycerol and less than 0.02% sodium azide | | |

General Information

| | |
|---------------------|---|
| Background | Parathyroid hormone (PTH) is a hormone secreted by the parathyroid glands that is important in bone remodeling, which is an ongoing process in which bone tissue is alternately resorbed and rebuilt over time. It essentially increases blood calcium levels. PTH essentially acts to increase the concentration of calcium in the blood by acting upon the parathyroid hormone 1 receptor, which is present at high levels in bone and kidney, and the parathyroid hormone 2 receptor, which is present at high levels in the central nervous system, pancreas, testis, and placenta. PTH was one of the first hormones to be shown to use the G-protein, adenylyl cyclase second messenger system. |
| Immunogen | Polyclonal antibody is produced by immunizing animals with a synthetic peptide of Parathyroid Hormone. |
| Purification | Polyclonal antibody was purified by Protein A affinity chromatography. |

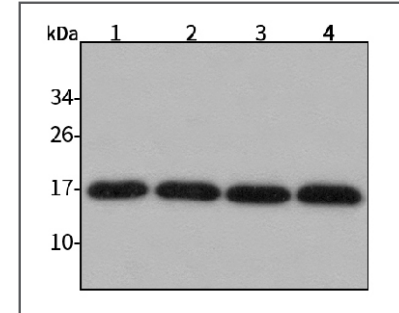
Anti-Parathyroid Hormone Rabbit pAb



WL02861

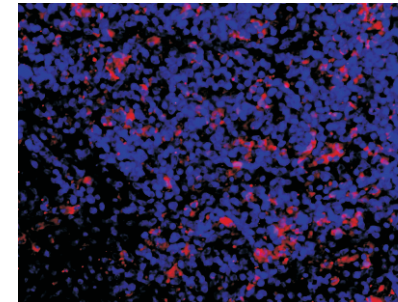
For Research Use Only. Not For Use In Diagnostic Procedures

Product Images



Western blot-Anti-Parathyroid Hormone pAb

Lane 1: Human HepG2 cell lysate
 Lane 2: Human Hela cell lysate
 Lane 3: Human BGC-823 cell lysate
 Lane 4: Human MGC-803 cell lysate
 All lanes: Anti-Parathyroid Hormone at 1:1000 dilution
 Lysates/proteins at 20-50 µg per lane.
 Predicted band size: 13 kDa
 Observed band size: 17 kDa



Immunofluorescence-Anti-Parathyroid Hormone pAb

Immunofluorescence analysis of paraffin-embedded rabbit spleen using anti-Parathyroid Hormone Rabbit Antibody at 1:500 dilution.
 Perform heat mediated antigen retrieval with Tris-EDTA buffer pH 9.0