

Anti-SUR-1 Rabbit pAb



WL01916

For Research Use Only. Not For Use In Diagnostic Procedures

Product Information

Product name	Anti-SUR-1 Rabbit pAb	
Source	Rabbit	
Species reactivity	Human	
Tested applications	Western blot	1:500-1:1000
	<i>*Suggested working dilutions are given as a guide only. It is recommended that the user titrates the product for use in their own experiment using appropriate negative and positive controls.</i>	
Molecular Wt.	140-180 kDa	
Pack size	50/100/200/500/1000µl	
Storage	Store at -20°C. Avoid freeze/thaw cycles.	
Storage buffer	Supplied in 20 mM phosphate (pH 7.5), 150 mM NaCl, 100 µg/ml BSA, 50% glycerol and less than 0.02% sodium azide	

General Information

Background	The protein encoded by SUR-1 is a member of the superfamily of ATP-binding cassette (ABC) transporters. SUR-1 is required for the regulation of glucose-induced Insulin secretion by controlling K-ATP channel activity of the pancreatic cell membrane. Loss-of-function mutations in the SUR-1 gene causes the disease persistent hyperinsulinemic hypoglycemia of infancy (PHHI). PHHI is characterized by increased irregular Insulin secretion, which causes disorganized formation of new islets and leads to hypoglycemia, coma and severe brain damage.
Immunogen	Polyclonal antibody is produced by immunizing animals with a synthetic peptide of SUR-1.
Purification	Polyclonal antibody was purified by immunogen affinity chromatography.

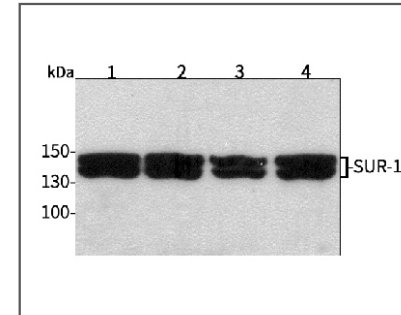
Anti-SUR-1 Rabbit pAb



WL01916

For Research Use Only. Not For Use In Diagnostic Procedures

Product Images



Western blot-anti-SUR-1 pAb

Lane 1: Human HeLa cell lysate 30µg

Lane 2: Human BGC-823 cell lysate 30µg

Lane 3: Human MGC-803 cell lysate 30µg

Lane 4: Human SGC-7901 cell lysate 30µg

Separation gel: 8% polyacrylamide

Electrophoresis: 100V, 4°C, 3h

Transmembrane: 100V, 4°C, 1h

Blocking: 5% w/v nonfat dry milk, 1×TBST, at RT with gentle shaking

Primary antibody: 1:1000 in blocking buffer, 4°C, overnight

Visualization: ECL, 2min