

## Product Datasheet

### Anti-SMAD5 Rabbit pAb



WL00277

For Research Use Only. Not For Use In Diagnostic Procedures

## Product Information

<b>Product name</b>	Anti-SMAD5 Rabbit pAb
<b>Source</b>	Rabbit
<b>Species reactivity</b>	Human
<b>Tested applications</b>	Western blot 1:1000-1:2000
	<i>*Suggested working dilutions are given as a guide only. It is recommended that the user titrates the product for use in their own experiment using appropriate negative and positive controls.</i>
<b>Molecular Wt.</b>	52 kDa
<b>Pack size</b>	50/100/200/500/1000µl
<b>Storage</b>	Store at -20°C. <b>Avoid freeze/thaw cycles.</b>
<b>Storage buffer</b>	Supplied in 20 mM phosphate (pH 7.5), 150 mM NaCl, 100 µg/ml BSA, 50% glycerol and less than 0.02% sodium azide

## General Information

<b>Background</b>	Smad proteins, the mammalian homologs of the Drosophila Mothers against dpp (Mad) have been implicated as downstream effectors of TGF/BMP signaling. Smad5 is involved in the transforming growth factor beta signaling pathway that results in an inhibition of the proliferation of hematopoietic progenitor cells. Smad5 and mammalian Smad8 (also designated Smad9 or MADH6) are effectors of BMP2 and BMP4 function while Smad2 (also designated Madr2 or JV18-1) and Smad3 are involved in TGF and activin-mediated growth modulation.
<b>Immunogen</b>	Polyclonal antibody is produced by immunizing animals with a recombinant protein of SMAD5.
<b>Purification</b>	Polyclonal antibody was purified by Protein A affinity chromatography.

## Product Datasheet

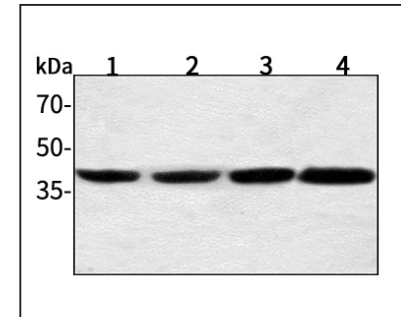
### Anti-SMAD5 Rabbit pAb



WL00277

For Research Use Only. Not For Use In Diagnostic Procedures

## Product Images



### Western blot-Anti-SMAD5 pAb

Lane 1: Human HepG2 cell lysate 30µg

Lane 2: Human Hela cell lysate 30µg

Lane 3: Human BGC-823 cell lysate 30µg

Lane 4: Human MGC-803 cell lysate 30µg

Separation gel: 10% polyacrylamide

Electrophoresis: 100V, 4°C, 3h

Transmembrane: 100V, 4°C, 1h

Blocking: 5% w/v nonfat dry milk, 1×TBST, at RT with gentle shaking

Primary antibody: 1:1000 in blocking buffer, 4°C, overnight

Secondary antibody (WLA023a) : 1:7000-1:8000, 45min

Detection: ECL, 30s-2min