

Anti-CtBP1 Rabbit pAb



WL04477

For Research Use Only. Not For Use In Diagnostic Procedures

Product Information

Product name	Anti-CtBP1 Rabbit pAb
Source	Rabbit
Species reactivity	Human, Mouse, Rat
Tested applications	WB 1:500-1:1000
Pack size	50/100/200/500/1000µl
Storage	Store at -20°C. Avoid freeze/thaw cycles.
Storage buffer	Supplied in 20 mM phosphate (pH 7.5), 150 mM NaCl, 100 µg/ml BSA, 50% glycerol and less than 0.02% sodium azide

General Information

Background CTBP1 is a protein that binds to the C-terminus of adenovirus E1A proteins. CTBP1 is a cellular phosphoprotein that associates with various proteins and functions as a corepressor of transcription. This protein and the product of a second closely related gene, CTBP2, can dimerize. CtBP1 is expressed from embryo to adult, but CtBP2 is mainly expressed during embryogenesis.

Immunogen Polyclonal antibody is produced by immunizing animals with a synthetic peptide of CtBP1.

Purification Polyclonal antibody was purified by immunogen affinity chromatography.

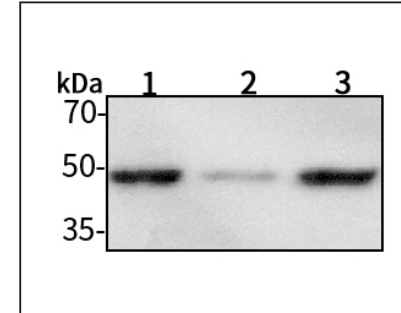
Anti-CtBP1 Rabbit pAb



WL04477

For Research Use Only. Not For Use In Diagnostic Procedures

Product Images



Western blot-Anti-CtBP1 pAb

Lane 1: Human HEK-293 cell lysate

Lane 2: Human A549 cell lysate

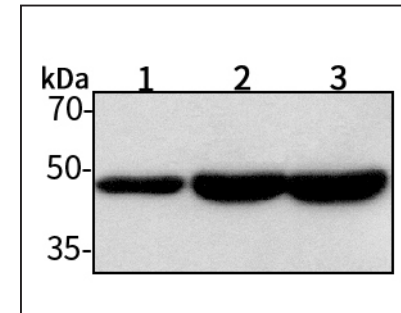
Lane 3: Human HUVEC cell lysate

All lanes: Anti-CtBP1 at 1:1000 dilution

Lysates/proteins at 20-50 µg per lane.

Predicted band size: 48 kDa

Observed band size: 48 kDa



Western blot-Anti-CtBP1 pAb

Lane 1: Mouse kidney tissue lysate

Lane 2: Mouse heart tissue lysate

Lane 3: Rat colon tissue lysate

All lanes: Anti-CtBP1 at 1:1000 dilution

Lysates/proteins at 20-50 µg per lane.

Predicted band size: 48 kDa

Observed band size: 48 kDa