

Anti-MYPT1 Rabbit pAb



WL02122

For Research Use Only. Not For Use In Diagnostic Procedures

Product Information

Product name	Anti-MYPT1 Rabbit pAb	
Source	Rabbit	
Species reactivity	Human	
Tested applications	WB	1:1000-1:2000
Pack size	50/100/200/500/1000µl	
Storage	Store at -20°C. Avoid freeze/thaw cycles.	
Storage buffer	Supplied in 20 mM phosphate (pH 7.5), 150 mM NaCl, 100 µg/ml BSA, 50% glycerol and less than 0.02% sodium azide	

General Information

Background Myosin phosphatase target subunit 1, which is also called the myosin-binding subunit of myosin phosphatase, is one of the subunits of myosin phosphatase. Myosin phosphatase regulates the interaction of actin and myosin in response to signaling through the small GTPase Rho. Rho activity inhibits myosin phosphatase via Rho-associated kinase (ROCK). Phosphorylation of MYPT1 at Thr696 and Thr853 results in phosphatase inhibition and cytoskeletal reorganization. Rho-associated kinase (Rho-kinase), which is activated by GTP. RhoA, phosphorylated MBS and consequently inactivated myosin phosphatase.

Immunogen Polyclonal antibody is produced by immunizing animals with a recombinant protein of MYPT1.

Purification Polyclonal antibody was purified by Protein A affinity chromatography.

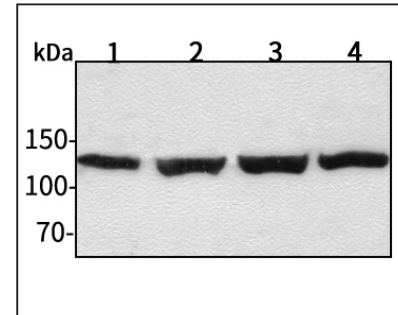
Anti-MYPT1 Rabbit pAb



WL02122

For Research Use Only. Not For Use In Diagnostic Procedures

Product Images



Western blot-Anti-MYPT1 pAb

Lane 1: Human HepG2 cell lysate
 Lane 2: Human Hela cell lysate
 Lane 3: Human BGC-823 cell lysate
 Lane 4: Human MGC-803 cell lysate
 All lanes: Anti-MYPT1 at 1:1000 dilution
 Lysates/proteins at 20-50 µg per lane.
 Predicted band size: 115 kDa
 Observed band size: 130 kDa