

Anti-OCT6 Rabbit pAb



WL04945

For Research Use Only. Not For Use In Diagnostic Procedures

Product Information

Product name	Anti-OCT6 Rabbit pAb	
Source	Rabbit	
Species reactivity	Human, Mouse, Rat	
Tested applications	WB	1:500-1:1000
Pack size	50/100/200/500/1000µl	
Storage	Store at -20°C. Avoid freeze/thaw cycles.	
Storage buffer	Supplied in 20 mM phosphate (pH 7.5), 150 mM NaCl, 100 µg/ml BSA, 50% glycerol and less than 0.02% sodium azide	

General Information

Background	OCT6, also named as POU3F1 and OTF6, belongs to the POU transcription factor family and Class-3 subfamily. OCT6 is a transcription factor that binds to the octamer motif. It is thought to be involved in early embryogenesis and neurogenesis.
-------------------	--

Immunogen	Polyclonal antibody is produced by immunizing animals with a synthetic peptide of OCT6.
------------------	---

Purification	Polyclonal antibody was purified by Immunogen affinity chromatography.
---------------------	--

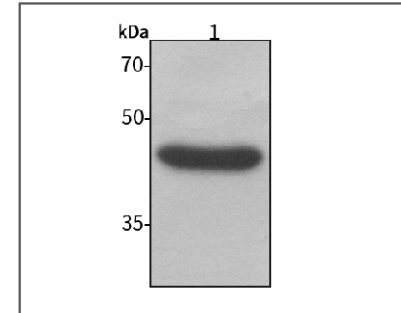
Anti-OCT6 Rabbit pAb



WL04945

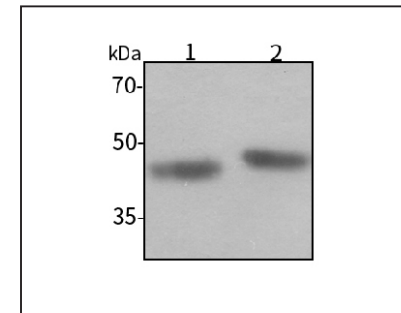
For Research Use Only. Not For Use In Diagnostic Procedures

Product Images



Western blot-Anti-OCT6 pAb

Lane 1: Human MCF-7 cell lysate
 All lanes: Anti-OCT6 at 1:500 dilution
 Lysates/proteins at 20-50 µg per lane.
 Predicted band size: 45 kDa
 Observed band size: 45 kDa



Western blot-Anti-OCT6 pAb

Lane 1: Rat colon tissue lysate
 Lane 2: Rat stomach tissue lysate
 All lanes: Anti-OCT6 at 1:500 dilution
 Lysates/proteins at 20-50 µg per lane.
 Predicted band size: 45 kDa
 Observed band size: 45 kDa