

## Anti-Somatostatin Rabbit pAb



WL01001

For Research Use Only. Not For Use In Diagnostic Procedures

## Product Information

<b>Product name</b>	Anti-Somatostatin Rabbit pAb		
<b>Source</b>	Rabbit		
<b>Species reactivity</b>	Human, Mouse, Rat		
<b>Tested applications</b>	Western blot	1:1000-1:2000	
	Immunohistochemistry	1:100-1:400	
	<i>*Suggested working dilutions are given as a guide only. It is recommended that the user titrates the product for use in their own experiment using appropriate negative and positive controls.</i>		
<b>Molecular Wt.</b>	Predicted band size: 17 kDa		
	Observed band size: 20 kDa		
<b>Pack size</b>	50/100/200/500/1000µl		
<b>Storage</b>	Store at -20°C. <b>Avoid freeze/thaw cycles.</b>		
<b>Storage buffer</b>	Supplied in 20 mM phosphate (pH 7.5), 150 mM NaCl, 100 µg/ml BSA, 50% glycerol and less than 0.02% sodium azide		

## General Information

**Background** Somatostatin, also known as growth hormone-inhibiting hormone (GHIH) or by several other names, is a peptide hormone that regulates the endocrine system and affects neurotransmission and cell proliferation via interaction with G protein-coupled somatostatin receptors and inhibition of the release of numerous secondary hormones. Somatostatin is found in both the hypothalamus and pancreas. Somatostatin is thought to be involved in the regulation of Insulin synthesis. Somatostatin affects rates of neurotransmission in the central nervous system and proliferation of both normal and tumorigenic cells.

**Immunogen** Polyclonal antibody is produced by immunizing animals with a synthetic peptide of Somatostatin.

**Purification** Polyclonal antibody was purified by Protein A affinity chromatography.

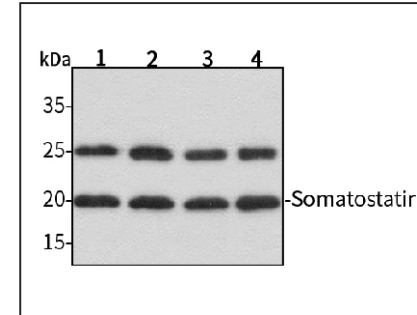
## Anti-Somatostatin Rabbit pAb



WL01001

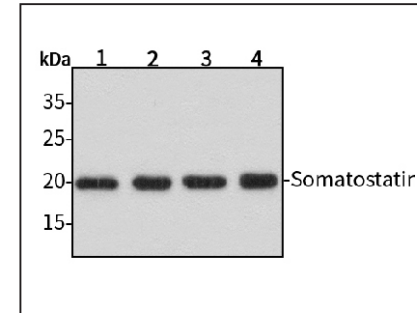
For Research Use Only. Not For Use In Diagnostic Procedures

## Product Images



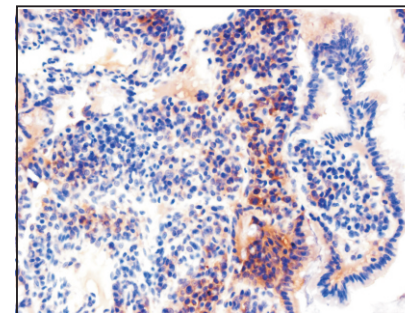
## Western blot-Anti-Somatostatin pAb

Lane 1: Human HepG2 cell lysate 30µg  
 Lane 2: Human Hela cell lysate 30µg  
 Lane 3: Human BGC-823 cell lysate 30µg  
 Lane 4: Human MGC-803 cell lysate 30µg  
 Separation gel: 15% polyacrylamide  
 Electrophoresis: 100V, 4°C, 3h  
 Transmembrane: 100V, 4°C, 1h  
 Blocking: 5% w/v nonfat dry milk, 1×TBST, at RT with gentle shaking  
 Primary antibody: 1:1000 in blocking buffer, 4°C, overnight  
 Secondary antibody (WLA023a) : 1:5000-1:10000, 45min  
 Visualization: ECL, 30s-2min



## Western blot-Anti-Somatostatin pAb

Lane 1: Mouse kidney tissue lysate 30µg  
 Lane 2: Mouse heart tissue lysate 30µg  
 Lane 3: Rat liver tissue lysate 30µg  
 Lane 4: Rat colon tissue lysate 30µg  
 Separation gel: 15% polyacrylamide  
 Electrophoresis: 100V, 4°C, 3h  
 Transmembrane: 100V, 4°C, 1h  
 Blocking: 5% w/v nonfat dry milk, 1×TBST, at RT with gentle shaking  
 Primary antibody: 1:1000 in blocking buffer, 4°C, overnight  
 Secondary antibody (WLA023a) : 1:5000-1:10000, 45min  
 Visualization: ECL, 30s-2min



## Immunohistochemistry-Anti-Somatostatin pAb

Sample: Rat colon (LPS treated) tissue  
 Antigen retrieval: pH 9.0 Tris-EDTA buffer  
 Primary antibody: 1:200, 4°C, overnight  
 Secondary antibody-Biotin: 1:150, 37°C, 1h  
 Streptavidin-HRP: 1:200, 37°C, 30min  
 Color Developing: DAB

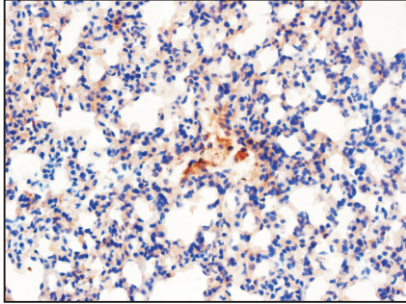
## Anti-Somatostatin Rabbit pAb



WL01001

For Research Use Only. Not For Use In Diagnostic Procedures

### Product Images



#### Immunohistochemistry-Anti-Somatostatin pAb

**Sample:** Mouse lung (LPS treated) tissue  
**Antigen retrieval:** pH 9.0 Tris-EDTA buffer  
**Primary antibody:** 1:200, 4°C, overnight  
**Secondary antibody-Biotin:** 1:150, 37°C, 1h  
**Streptavidin-HRP:** 1:200, 37°C, 30min  
**Color Developing:** DAB