

## Anti-Stim1 Rabbit pAb



WL02503

For Research Use Only. Not For Use In Diagnostic Procedures

## Product Information

<b>Product name</b>	Anti-Stim1 Rabbit pAb	
<b>Source</b>	Rabbit	
<b>Species reactivity</b>	Human, Mouse, Rat	
<b>Tested applications</b>	Western blot	1:500-1:1000

*\*Suggested working dilutions are given as a guide only. It is recommended that the user titrates the product for use in their own experiment using appropriate negative and positive controls.*

<b>Molecular Wt.</b>	86 kDa
<b>Pack size</b>	50/100/200/500/1000 $\mu$ l
<b>Storage</b>	Store at -20°C. <b>Avoid freeze/thaw cycles.</b>
<b>Storage buffer</b>	Supplied in 20 mM phosphate (pH 7.5), 150 mM NaCl, 100 $\mu$ g/ml BSA, 50% glycerol and less than 0.02% sodium azide

## General Information

**Background**

Ca<sup>2+</sup> is a key second messenger in many intracellular signaling pathways. Stromal interaction molecule 1 (Stim1) is a ubiquitously expressed cell surface transmembrane glycoprotein that plays a role in mediating Ca<sup>2+</sup> influx following the depletion of intracellular Ca<sup>2+</sup> stores. STIM1 is a potential tumor suppressor; defects in STIM1 may cause rhabdomyosarcoma and rhabdoid tumors. Stim1 is implicated in tumor growth suppression and stromal-hematopoietic cell interactions.

**Immunogen**

Polyclonal antibody is produced by immunizing animals with a synthetic peptide of Stim1.

**Purification**

Polyclonal antibody was purified by immunogen affinity chromatography.

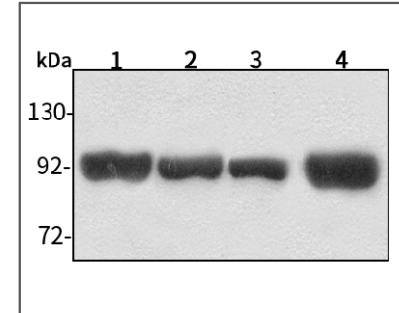
## Anti-Stim1 Rabbit pAb



WL02503

For Research Use Only. Not For Use In Diagnostic Procedures

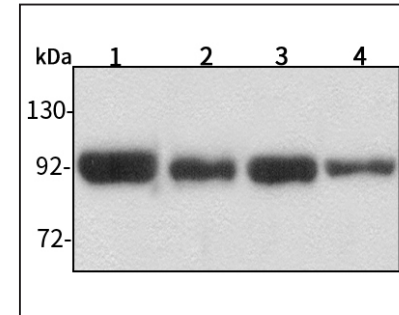
## Product Images



Western blot-Anti-Stim1 pAb

Lane 1: Human HepG2 cell lysate 30 $\mu$ g  
 Lane 2: Human Hela cell lysate 30 $\mu$ g  
 Lane 3: Human BGC-823 cell lysate 30 $\mu$ g  
 Lane 4: Human MGC-803 cell lysate 30 $\mu$ g  
 Separation gel: 8% polyacrylamide  
 Electrophoresis: 100V, 4°C, 3h  
 Transmembrane: 100V, 4°C, 1h

Blocking: 5% w/v nonfat dry milk, 1 $\times$  TBST, at RT with gentle shaking  
 Primary antibody: 1:1000 in blocking buffer, 4°C, overnight  
 Secondary antibody (WLA023a) : 1:5000-1:10000, 45min  
 Visualization: ECL, 30s-2min



Western blot-Anti-Stim1 pAb

Lane 1: Mouse kidney tissue lysate 30 $\mu$ g  
 Lane 2: Mouse heart tissue lysate 30 $\mu$ g  
 Lane 3: Rat brain tissue lysate 30 $\mu$ g  
 Lane 4: Rat liver tissue lysate 30 $\mu$ g  
 Separation gel: 8% polyacrylamide  
 Electrophoresis: 100V, 4°C, 3h  
 Transmembrane: 100V, 4°C, 1.5h

Blocking: 5% w/v nonfat dry milk, 1 $\times$  TBST, at RT with gentle shaking  
 Primary antibody: 1:1000 in blocking buffer, 4°C, overnight  
 Secondary antibody (WLA023a) : 1:5000-1:10000, 45min  
 Visualization: ECL, 30s-2min