

Anti-Haptoglobin α Rabbit pAb

WL02466a

For Research Use Only. Not For Use In Diagnostic Procedures

Product Information

Product name	Anti-Haptoglobin α Rabbit pAb	
Source	Rabbit	
Species reactivity	Human	
Tested applications	WB	1:500-1:1000
Pack size	50/100/200/500/1000 μ l	
Storage	Store at -20°C. Avoid freeze/thaw cycles.	
Storage buffer	Supplied in 20 mM phosphate (pH 7.5), 150 mM NaCl, 100 μ g/ml BSA, 50% glycerol and less than 0.02% sodium azide	

General Information

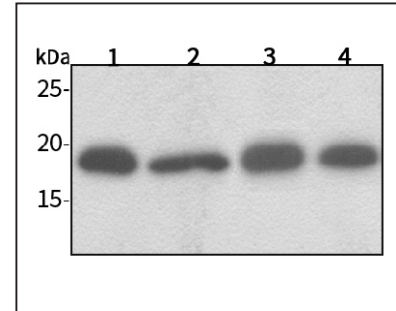
Background	Haptoglobin (Hp) is a blood plasma protein that functions to bind free Hemoglobin that has been released from erythrocytes, thereby inhibiting its oxidative activity. The protein encoded also exhibits antimicrobial activity against bacteria. A similar duplicated gene is located next to this gene on chromosome 16. Multiple transcript variants encoding different isoforms have been found for this gene. Haptoglobin levels are useful in diagnosing hemolytic anemia, the abnormal breakdown of red blood cells. Haptoglobin is expressed in mammalian hepatocytes as well as other tissues such as skin, lung and kidney.
Immunogen	Polyclonal antibody is produced by immunizing animals with a synthetic peptide of Haptoglobin α .
Purification	Polyclonal antibody was purified by immunogen affinity chromatography.

Anti-Haptoglobin α Rabbit pAb

WL02466a

For Research Use Only. Not For Use In Diagnostic Procedures

Product Images

Western blot-Anti-Haptoglobin α pAb

Lane 1: Human HepG2 cell lysate
 Lane 2: Human Hela cell lysate
 Lane 3: Human BGC-823 cell lysate
 Lane 4: Human MGC-803 cell lysate
 All lanes: Anti-Haptoglobin α at 1:1000 dilution
 Lysates/proteins at 20-50 μ g per lane.
 Predicted band size: 43 kDa
 Observed band size: 9-18 kDa