

Anti-ATF-6 Rabbit pAb



WL01153

For Research Use Only. Not For Use In Diagnostic Procedures

Product Information

Product name	Anti-ATF-6 Rabbit pAb
Source	Rabbit
Species reactivity	Human
Tested applications	WB 1:1000-1:2000
Pack size	50/100/200/500/1000µl
Storage	Store at -20°C. Avoid freeze/thaw cycles.
Storage buffer	Supplied in 20 mM phosphate (pH 7.5), 150 mM NaCl, 100 µg/ml BSA, 50% glycerol and less than 0.02% sodium azide

General Information

Background

ATF-6 is a member of transcription factors that activates target genes for the unfolded protein response (UPR) during endoplasmic reticulum (ER) stress. Although it is a transcription factor, this protein is unusual in that it is synthesized as a transmembrane protein that is embedded in the ER. It functions as an ER stress sensor/transducer, and following ER stress-induced proteolysis, it functions as a nuclear transcription factor via a cis-acting ER stress response element (ERSE) that is present in the promoters of genes encoding ER chaperones. ATF-6 has been identified as a survival factor for quiescent but not proliferative squamous carcinoma cells. There have been conflicting reports about the association of polymorphisms in this gene with diabetes in different populations, but another polymorphism has been associated with increased plasma cholesterol levels.

Immunogen

Polyclonal antibody is produced by immunizing animals with a synthetic peptide of ATF-6.

Purification

Polyclonal antibody was purified by protein A affinity chromatography.

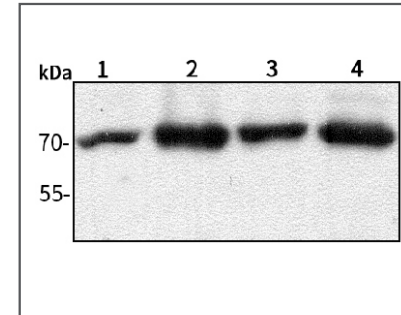
Anti-ATF-6 Rabbit pAb



WL01153

For Research Use Only. Not For Use In Diagnostic Procedures

Product Images



Western blot-Anti-ATF-6 pAb

Lane 1: Human HepG2 cell lysate

Lane 2: Human Hela cell lysate

Lane 3: Human BGC-823 cell lysate

Lane 4: Human MGC-803 cell lysate

All lanes: Anti-ATF-6 at 1:1000 dilution

Lysates/proteins at 20-50 µg per lane.

Predicted band size: 75 kDa

Observed band size: 75 kDa