

## Anti-PTEN Rabbit pAb



WL01901

For Research Use Only. Not For Use In Diagnostic Procedures

## Product Information

<b>Product name</b>	Anti-PTEN Rabbit pAb	
<b>Source</b>	Rabbit	
<b>Species reactivity</b>	Human, Mouse, Rat	
<b>Tested applications</b>	Western blot	1:1000-1:2000
	Immunohistochemistry	1:200

*\*Suggested working dilutions are given as a guide only. It is recommended that the user titrates the product for use in their own experiment using appropriate negative and positive controls.*

<b>Molecular Wt.</b>	47 kDa
<b>Pack size</b>	50/100/200/500/1000µl
<b>Storage</b>	Store at -20°C. <b>Avoid freeze/thaw cycles.</b>
<b>Storage buffer</b>	Supplied in 20 mM phosphate (pH 7.5), 150 mM NaCl, 100 µg/ml BSA, 50% glycerol and less than 0.02% sodium azide

## General Information

**Background** PTEN, also referred to as MMAC phosphatase, is a tumor suppressor implicated in a wide variety of human cancers. It encodes a 403 amino acid polypeptide originally described as a dual-specificity protein phosphatase. Unlike most of the protein tyrosine phosphatases, this protein preferentially dephosphorylates phosphoinositide substrates. It negatively regulates intracellular levels of phosphatidylinositol-3,4,5-trisphosphate in cells and functions as a tumor suppressor by negatively regulating AKT/PKB signaling pathway. PTEN regulates p53 protein levels and activity and is involved in G protein-coupled signaling during chemotaxis.

**Immunogen** Polyclonal antibody is produced by immunizing animals with a synthetic peptide of PTEN.

**Purification** Polyclonal antibody was purified by Protein A affinity chromatography.

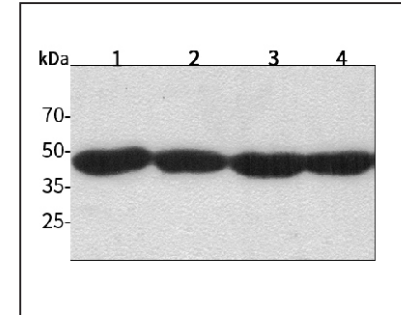
## Anti-PTEN Rabbit pAb



WL01901

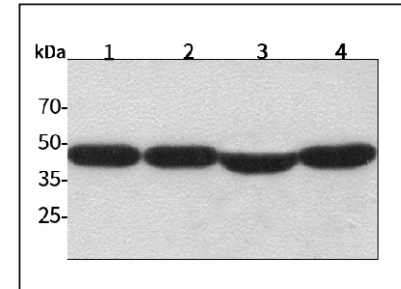
For Research Use Only. Not For Use In Diagnostic Procedures

## Product Images



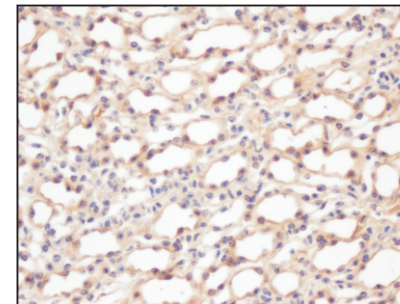
## Western blot-Anti-PTEN pAb

Lane 1: Human HepG2 cell lysate 24µg  
 Lane 2: Human HeLa cell lysate 24µg  
 Lane 3: Human BGC-823 cell lysate 24µg  
 Lane 4: Human MGC-803 cell lysate 24µg  
 Separation gel: 10% polyacrylamide  
 Electrophoresis: 100V, 4°C, 3h  
 Transmembrane: 100V, 4°C, 1h  
 Blocking: 5% w/v nonfat dry milk, 1×TBST, at RT with gentle shaking  
 Primary antibody: 1:1000 in blocking buffer, 4°C, overnight  
 Visualization: ECL, 30s-2min



## Western blot-Anti-PTEN pAb

Lane 1: Mouse liver tissue lysate 24µg  
 Lane 2: Mouse brain tissue lysate 24µg  
 Lane 3: Rat colon tissue lysate 24µg  
 Lane 4: Rat lung tissue lysate 24µg  
 Separation gel: 10% polyacrylamide  
 Electrophoresis: 100V, 4°C, 3h  
 Transmembrane: 100V, 4°C, 1h  
 Blocking: 5% w/v nonfat dry milk, 1×TBST, at RT with gentle shaking  
 Primary antibody: 1:1000 in blocking buffer, 4°C, overnight  
 Visualization: ECL, 30s-2min



## Immunohistochemistry-Anti-PTEN pAb

Sample: Mouse kidney tissue  
 Antigen retrieval: pH 9.0 Tris-EDTA buffer  
 Primary antibody: 1:200, 4°C, overnight  
 Secondary antibody-Biotin: 1:150, 37°C, 1h  
 Streptavidin-HRP: 1:200, 37°C, 30min  
 Visualization: DAB

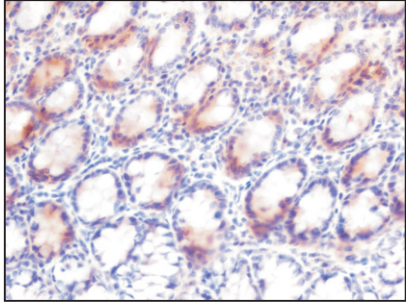
## Anti-PTEN Rabbit pAb



WL01901

For Research Use Only. Not For Use In Diagnostic Procedures

### Product Information



#### Immunohistochemistry-Anti-PTEN pAb

**Sample:** Rat colon tissue  
**Antigen retrieval:** pH 9.0 Tris-EDTA buffer  
**Primary antibody:** 1:100, 4°C, overnight  
**Secondary antibody-Biotin:** 1:150, 37°C, 1h  
**Streptavidin-HRP:** 1:200, 37°C, 30min  
**Visualization:** DAB