

Anti-HSL Rabbit pAb



WL02643

For Research Use Only. Not For Use In Diagnostic Procedures

Product Information

Product name	Anti-HSL Rabbit pAb		
Source	Rabbit		
Species reactivity	Human, Mouse, Rat		
Tested applications	WB	1:500-1:1000	
	IHC	1:200-1:600	
Cellular localization	Secreted and Cell membrane		
Pack size	50/100/200/500/1000µl		
Storage	Store at -20°C. Avoid freeze/thaw cycles.		
Storage buffer	Supplied in 20 mM phosphate (pH 7.5), 150 mM NaCl, 100 µg/ml BSA, 50% glycerol and less than 0.02% sodium azide		

General Information

Background

HSL (hormone-sensitive lipase), a cytosolic neutral lipase regulated by reversible phosphorylation, catalyzes the rate limiting step in triglyceride lipolysis. Lipolytic stimuli activate adenylyl cyclase and thus increase intracellular cAMP levels, which in turn activate protein kinase A (PKA). HSL has been shown to express in several non-adipose tissues, including ovary, adrenal gland, heart, skeletal and smooth muscle, placenta, and pancreatic beta-cells, as well as testes. HSL has emerged as a potential target for lipid disorders and obesity.

Immunogen

Polyclonal antibody is produced by immunizing animals with a synthetic peptide of HSL.

Purification

Polyclonal antibody was purified by immunogen affinity chromatography.

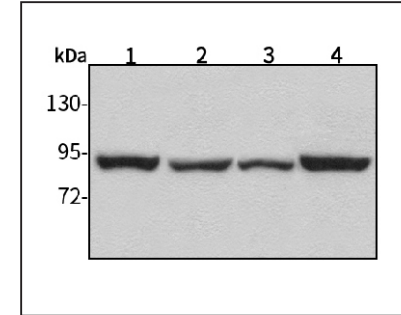
Anti-HSL Rabbit pAb



WL02643

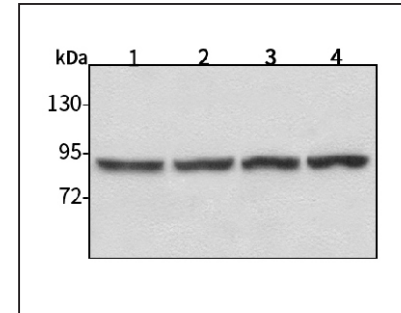
For Research Use Only. Not For Use In Diagnostic Procedures

Product Images



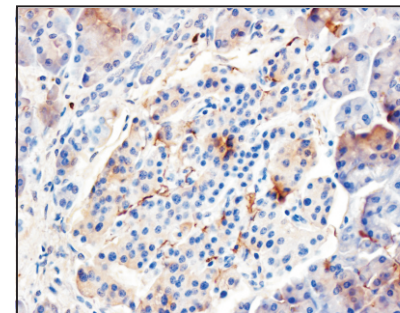
Western blot-Anti-HSL pAb

Lane 1: Human HepG2 cell lysate
 Lane 2: Human Hela cell lysate
 Lane 3: Human BGC-823 cell lysate
 Lane 4: Human MGC-803 cell lysate
 All lanes: Anti-HSL at 1:1000 dilution
 Lysates/proteins at 20-50 µg per lane.
 Predicted band size: 117 kDa
 Observed band size: 92 kDa



Western blot-Anti-HSL pAb

Lane 1: Mouse kidney tissue lysate
 Lane 2: Mouse heart tissue lysate
 Lane 3: Rat brain tissue lysate
 Lane 4: Rat stomach tissue lysate
 All lanes: Anti-HSL at 1:1000 dilution
 Lysates/proteins at 20-50 µg per lane.
 Predicted band size: 117 kDa
 Observed band size: 92 kDa



Immunohistochemistry-Anti-HSL pAb

Immunohistochemical analysis of paraffin-embedded human pancreatic cancer using anti-HSL Rabbit Antibody at 1:300 dilution. Perform heat mediated antigen retrieval with Tris-EDTA buffer pH 9.0

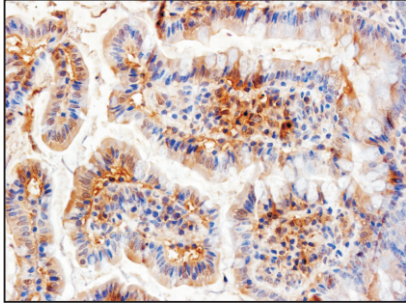
Anti-HSL Rabbit pAb



WL02643

For Research Use Only. Not For Use In Diagnostic Procedures

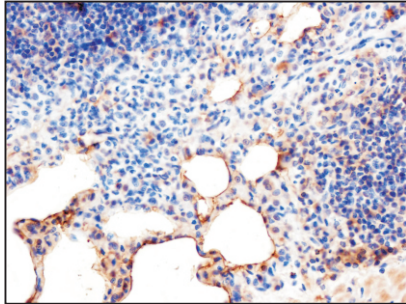
Product Information



Immunohistochemistry-Anti-HSL pAb

Immunohistochemical analysis of paraffin-embedded rat colon using anti-HSL Rabbit Antibody at 1:300 dilution.

Perform heat mediated antigen retrieval with Tris-EDTA buffer pH 9.0



Immunohistochemistry-Anti-HSL pAb

Immunohistochemical analysis of paraffin-embedded mouse lung using anti-HSL Rabbit Antibody at 1:300 dilution.

Perform heat mediated antigen retrieval with Tris-EDTA buffer pH 9.0