

Anti-SDF1 Rabbit pAb



WL02283

For Research Use Only. Not For Use In Diagnostic Procedures

Product Information

Product name	Anti-SDF1 Rabbit pAb
Source	Rabbit
Species reactivity	Human, Mouse, Rat
Tested applications	Western blot 1:500-1:1000 Immunohistochemistry 1:100-1:200
	<i>*Suggested working dilutions are given as a guide only. It is recommended that the user titrates the product for use in their own experiment using appropriate negative and positive controls.</i>
Molecular Wt.	Predicted band size : 11 kDa Observed band size : 15 kDa
Pack size	50/100/200/500/1000μl
Storage	Store at -20°C. Avoid freeze/thaw cycles.
Storage buffer	Supplied in 20 mM phosphate (pH 7.5), 150 mM NaCl, 100 μg/ml
General Information	BSA, 50% glycerol and less than 0.02% sodium azide

Background

The stromal cell derived factor 1 (SDF1, CXCL12) is a small, pro-inflammatory chemoattractant cytokine that regulates leukocyte trafficking through interactions with its cognate 7-transmembrane G protein-coupled receptors. It functions as the ligand for the G-protein coupled receptor, chemokine (C-X-C motif) receptor 4, and plays a role in many diverse cellular functions, including embryogenesis, immune surveillance, inflammation response, tissue homeostasis, and tumor growth and metastasis. Alternative splicing and differential processing during maturation produce a pair of SDF1 isoforms (SDF1 α and SDF1 β) that have different properties and biological activities.

Immunogen

Polyclonal antibody is produced by immunizing animals with a synthetic peptide of SDF1.

Purification

Polyclonal antibody was purified by immunogen affinity chromatography.

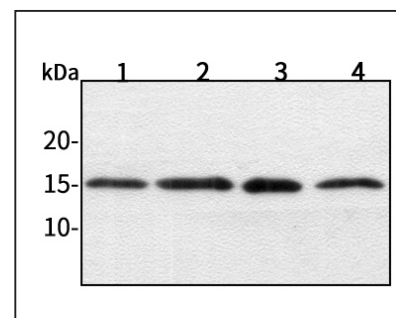
Anti-SDF1 Rabbit pAb



WL02283

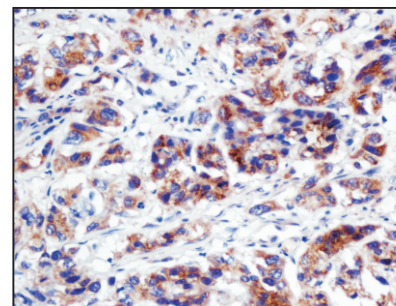
For Research Use Only. Not For Use In Diagnostic Procedures

Product Images



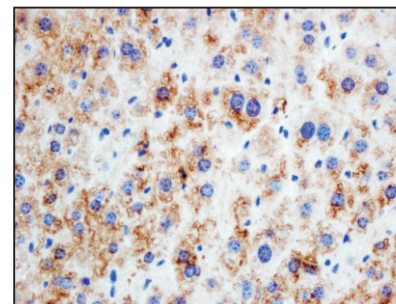
Western blot-Anti-SDF1 pAb

Lane 1: Human HepG2 cell lysate 30μg
 Lane 2: Human Hela cell lysate 30μg
 Lane 3: Human BGC-823 cell lysate 30μg
 Lane 4: Human MGC-803 cell lysate 30μg
 Separation gel: 15% polyacrylamide
 Electrophoresis: 100V, 4°C, 3h
 Transmembrane: 100V, 4°C, 1h
 Blocking: 5% w/v nonfat dry milk, 1 × TBST, at RT with gentle shaking
 Primary antibody: 1:1000 in blocking buffer, 4°C, overnight
 Secondary antibody (WLA023a) : 1:5000-1:10000, 45min
 Detection: ECL, 30s-2min



Immunohistochemistry-Anti-SDF1 pAb

Sample: Human pancreatic cancer tissue
 Antigen retrieval: pH 9.0 Tris-EDTA buffer
 Primary antibody: 1:100, 4°C, overnight
 Secondary antibody-Biotin: 1:150, 37°C, 1h
 Streptavidin-HRP: 1:200, 37°C, 30min
 Color Developing: DAB



Immunohistochemistry-Anti-SDF1 pAb

Sample: Mouse liver tissue
 Antigen retrieval: pH 9.0 Tris-EDTA buffer
 Primary antibody: 1:200, 4°C, overnight
 Secondary antibody-Biotin: 1:150, 37°C, 1h
 Streptavidin-HRP: 1:200, 37°C, 30min
 Color Developing: DAB

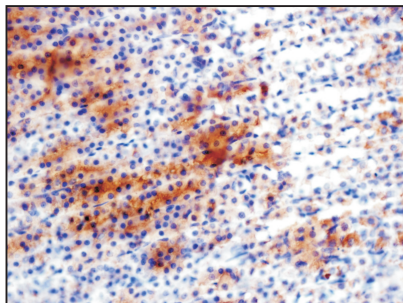
Anti-SDF1 Rabbit pAb



WL02283

For Research Use Only. Not For Use In Diagnostic Procedures

Product Information



Immunohistochemistry-Anti-SDF1 pAb

Sample: Rat stomach tissue

Antigen retrieval: pH 9.0 Tris-EDTA buffer

Primary antibody: 1:100, 4°C, overnight

Secondary antibody-Biotin: 1:150, 37°C, 1h

Streptavidin-HRP: 1:200, 37°C, 30min

Color Developing: DAB