

Anti-SMAD2/3 Rabbit pAb



WL01520

For Research Use Only. Not For Use In Diagnostic Procedures

Product Information

Product name	Anti-SMAD2/3 Rabbit pAb	
Source	Rabbit	
Species reactivity	Human, Mouse, Rat, Rabbit	
Tested applications	WB	1:1000-1:2000
	IHC	1:100-1:400
	IF	1:300
Cellular localization	Secreted and Cell membrane	
Pack size	50/100/200/500/1000μl	
Storage	Store at -20°C. Avoid freeze/thaw cycles.	
Storage buffer	Supplied in 20 mM phosphate (pH 7.5), 150 mM NaCl, 100 μg/ml	
	BSA, 50% glycerol and less than 0.02% sodium azide	

General Information

Background	Members of the Smad family of signal transduction molecules are components of a critical intracellular pathway that transmit TGF-β signals from the cell surface into the nucleus. Smad1 and Smad5 are effectors of BMP-2 and BMP-4 function, while Smad2 and Smad3 are involved in TGF-β and Activin-mediated growth modulation. Smad4 has been shown to mediate all of the above activities through interaction with various Smad family members. The phosphorylated receptor-regulated Smad associates from the receptor and forms a heteromeric complex with the co-Smad (Smad4), allowing translocation of the complex to the nucleus. Once in the nucleus, Smads can target a variety of DNA binding proteins to regulate transcriptional responses.
Immunogen	Polyclonal antibody is produced by immunizing animals with a synthetic peptide of SMAD2/3.
Purification	Polyclonal antibody was purified by Protein A affinity chromatography.

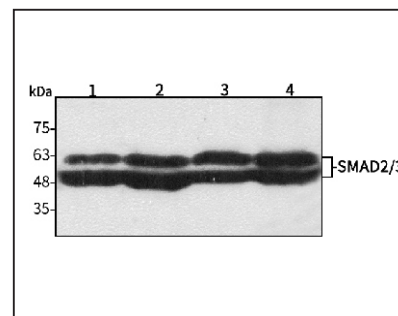
Anti-SMAD2/3 Rabbit pAb



WL01520

For Research Use Only. Not For Use In Diagnostic Procedures

Product Images



Western blot-Anti-SMAD2/3 pAb

Lane 1: Human Hela cell lysate

Lane 2: Human BGC-823 cell lysate

Lane 3: Human MGC-803 cell lysate

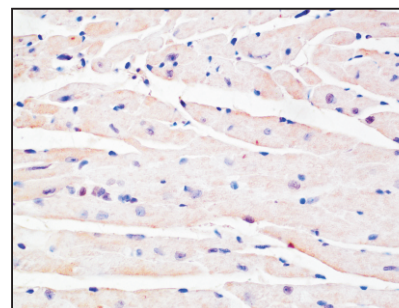
Lane 4: Human SGC-7901 cell lysate

All lanes: Anti-SMAD2/3 at 1:1000 dilution

Lysates/proteins at 20-50 μg per lane.

Predicted band size: 52,48 kDa

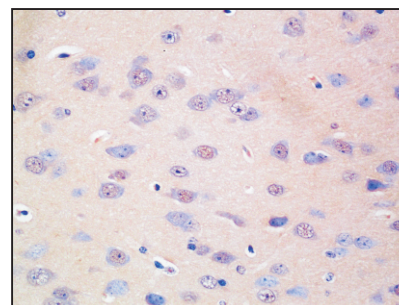
Observed band size: 52,60 kDa



Immunohistochemistry-Anti-SMAD2/3 pAb

Immunohistochemical analysis of paraffin-embedded mouse heart using anti-SMAD2/3 Rabbit Antibody at 1:200 dilution.

Perform heat mediated antigen retrieval with Tris-EDTA buffer pH 9.0



Immunohistochemistry-Anti-SMAD2/3 pAb

Immunohistochemical analysis of paraffin-embedded mouse brain using anti-SMAD2/3 Rabbit Antibody at 1:200 dilution.

Perform heat mediated antigen retrieval with Tris-EDTA buffer pH 9.0

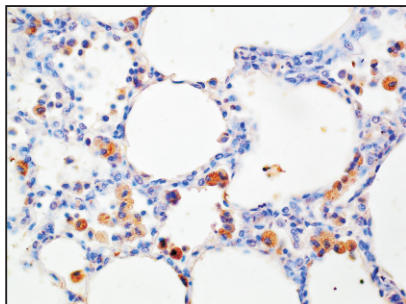
Anti-SMAD2/3 Rabbit pAb



For Research Use Only. Not For Use In Diagnostic Procedures

WL01520

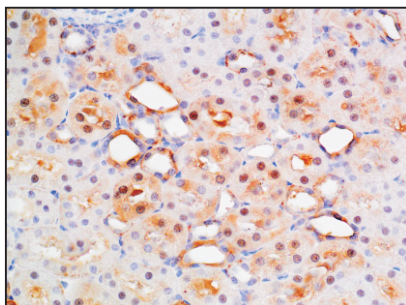
Product Information



Immunohistochemistry-Anti-SMAD2/3 pAb

Immunohistochemical analysis of paraffin-embedded rat lung using anti-SMAD2/3 Rabbit Antibody at 1:200 dilution.

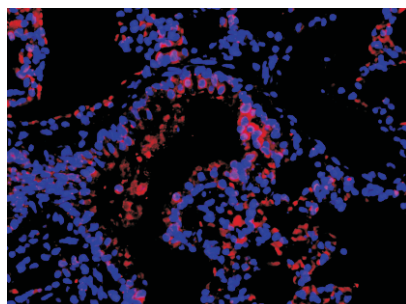
Perform heat mediated antigen retrieval with Tris-EDTA buffer pH 9.0



Immunohistochemistry-Anti-SMAD2/3 pAb

Immunohistochemical analysis of paraffin-embedded rat kidney using anti-SMAD2/3 Rabbit Antibody at 1:200 dilution.

Perform heat mediated antigen retrieval with Tris-EDTA buffer pH 9.0



Immunofluorescence-Anti-SMAD2/3 pAb

Immunofluorescence analysis of paraffin-embedded rat lung using anti-SMAD2/3 Rabbit Antibody at 1:300 dilution.

Perform heat mediated antigen retrieval with Tris-EDTA buffer pH 9.0