

Anti-CSK Rabbit pAb



WL05178

For Research Use Only. Not For Use In Diagnostic Procedures

Product Information

Product name	Anti-CSK Rabbit pAb		
Source	Rabbit		
Species reactivity	Human, Mouse, Rat		
Tested applications	WB	1:1000-1:2000	
Pack size	50/100/200/500/1000µl		
Storage	Store at -20°C. Avoid freeze/thaw cycles.		
Storage buffer	Supplied in 20 mM phosphate (pH 7.5), 150 mM NaCl, 100 µg/ml BSA, 50% glycerol and less than 0.02% sodium azide		

General Information

Background CSK(Tyrosine-protein kinase CSK) is also named as C-Src kinase, protein-tyrosine kinase CYL and belongs to the protein kinase superfamily. Csk has been identified as an Src-related tyrosine kinase having both SH2 and SH3 domains and a catalytic domain, but lacking sequences amino-terminal to the SH3 domain as well as carboxy-terminal regulatory sequences.

Immunogen Polyclonal antibody is produced by immunizing animals with a synthetic peptide of CSK.

Purification Polyclonal antibody was purified by Protein A affinity chromatography.

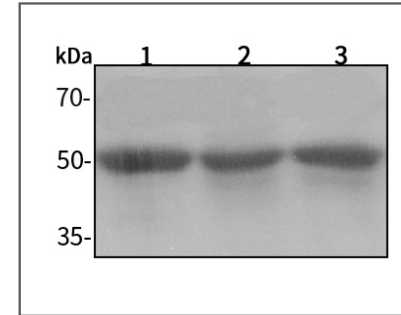
Anti-CSK Rabbit pAb



WL05178

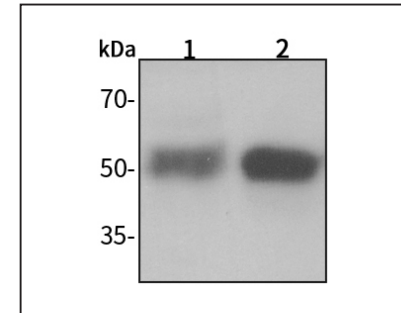
For Research Use Only. Not For Use In Diagnostic Procedures

Product Images



Western blot-Anti-CSK pAb

Lane 1: Human HEK-293 cell lysate
 Lane 2: Human HUVEC cell lysate
 Lane 3: Human SW480 cell lysate
 All lanes: Anti-CSK at 1:1000 dilution
 Lysates/proteins at 20-50 µg per lane.
 Predicted band size: 50 kDa
 Observed band size: 50 kDa



Western blot-Anti-CSK pAb

Lane 1: Mouse kidney tissue lysate
 Lane 2: Rat heart tissue lysate
 All lanes: Anti-CSK at 1:1000 dilution
 Lysates/proteins at 20-50 µg per lane.
 Predicted band size: 50 kDa
 Observed band size: 50 kDa