

Anti-Cleaved Caspase-9 Rabbit pAb



WL01838

For Research Use Only. Not For Use In Diagnostic Procedures

Product Information

Product name	Anti-Cleaved Caspase-9 Rabbit pAb	
Source	Rabbit	
Species reactivity	Human, Mouse, Rat	
Tested applications	Western blot	1:1000-1:2000

**Suggested working dilutions are given as a guide only. It is recommended that the user titrates the product for use in their own experiment using appropriate negative and positive controls.*

Molecular Wt.	17kDa
Pack size	50/100/200/500/1000 μ l
Storage	Store at -20°C. Avoid freeze/thaw cycles.
Storage buffer	Supplied in 20 mM phosphate (pH 7.5), 150 mM NaCl, 100 μ g/ml BSA, 50% glycerol and less than 0.02% sodium azide

General Information

Background

Caspase-9 encodes a member of the cysteine-aspartic acid protease (caspase) family. Sequential activation of caspases plays a central role in the execution-phase of cell apoptosis. Caspases exist as inactive proenzymes which undergo proteolytic processing at conserved aspartic residues to produce two subunits, large and small, that dimerize to form the active enzyme. This protein can undergo autoproteolytic processing and activation by the apoptosome, a protein complex of cytochrome c and the apoptotic peptidase activating factor 1; this step is thought to be one of the earliest in the caspase activation cascade. This protein is thought to play a central role in apoptosis and to be a tumor suppressor.

Immunogen

Polyclonal antibody is produced by immunizing animals with a synthetic peptide of Cleaved Caspase-9.

Purification

Polyclonal antibody was purified by Protein A affinity chromatography.

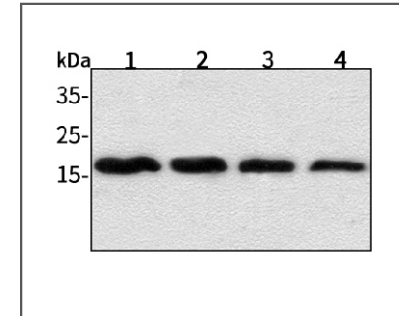
Anti-Cleaved Caspase-9 Rabbit pAb



WL01838

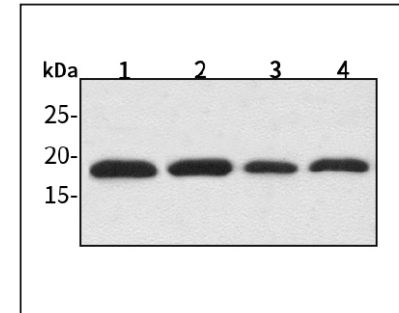
For Research Use Only. Not For Use In Diagnostic Procedures

Product Images



Western blot-Anti-Cleaved Caspase-9 pAb

Lane 1: Human HepG2 cell lysate 30 μ g
 Lane 2: Human HeLa cell lysate 30 μ g
 Lane 3: Human BGC-823 cell lysate 30 μ g
 Lane 4: Human MGC-803 cell lysate 30 μ g
 Separation gel: 15% polyacrylamide
 Electrophoresis: 100V, 4°C, 3h
 Transmembrane: 100V, 4°C, 1h
 Blocking: 5% w/v nonfat dry milk, 1 \times TBST, at RT with gentle shaking
 Primary antibody: 1:1000 in blocking buffer, 4°C, overnight
 Secondary antibody (WLA023a) : 1:7000-1:8000, 45min
 Detection: ECL, 30s-2min



Western blot-Anti-Cleaved Caspase-9 pAb

Lane 1: Mouse brain tissue lysate 30 μ g
 Lane 2: Mouse stomach tissue lysate 30 μ g
 Lane 3: Rat testicle tissue lysate 30 μ g
 Lane 4: Rat kidney tissue lysate 30 μ g
 Separation gel: 15% polyacrylamide
 Electrophoresis: 100V, 4°C, 3h
 Transmembrane: 100V, 4°C, 1h
 Blocking: 5% w/v nonfat dry milk, 1 \times TBST, at RT with gentle shaking
 Primary antibody: 1:1000 in blocking buffer, 4°C, overnight
 Secondary antibody (WLA023a) : 1:5000-1:10000, 45min