

Anti-PKC γ Rabbit pAb

WL02938

For Research Use Only. Not For Use In Diagnostic Procedures

Product Information

Product name	Anti-PKC γ Rabbit pAb	
Source	Rabbit	
Species reactivity	Human	
Tested applications	Western blot	1:1000-1:2000
	<i>*Suggested working dilutions are given as a guide only. It is recommended that the user titrates the product for use in their own experiment using appropriate negative and positive controls.</i>	
Molecular Wt.	80 kDa	
Pack size	50/100/200/500/1000 μ l	
Storage	Store at -20°C. Avoid freeze/thaw cycles.	
Storage buffer	Supplied in 20 mM phosphate (pH 7.5), 150 mM NaCl, 100 μ g/ml BSA, 50% glycerol and less than 0.02% sodium azide	

General Information

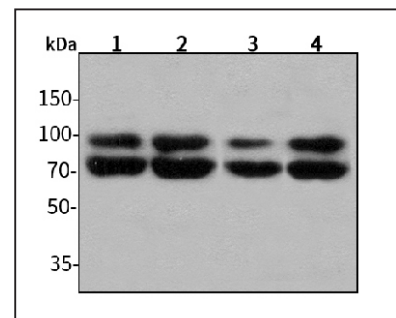
Background	Protein kinase C (PKC) is a family of serine- and threonine-specific protein kinases that can be activated by calcium and second messenger diacylglycerol. PKC family members phosphorylate a wide variety of protein targets and are known to be involved in diverse cellular signaling pathways. PKCs can be subdivided into at least two major classes, including conventional (c) PKC isoforms (α , β I, β II and γ) and novel (n) PKC isoforms (δ , ϵ , ζ , η , θ , λ /l, μ and ν). Patterns of expression for each PKC isoform differ among tissues and PKC family members exhibit clear differences in their cofactor dependencies. For instance, the kinase activities of PKC δ and ϵ are independent of Ca^{2+} . On the other hand, most of the other PKC members possess phorbol ester-binding activities and kinase activities.
Immunogen	Polyclonal antibody is produced by immunizing animals with a synthetic peptide of PKC γ .
Purification	Polyclonal antibody was purified by protein A affinity chromatography.

Anti-PKC γ Rabbit pAb

WL02938

For Research Use Only. Not For Use In Diagnostic Procedures

Product Images

Western blot-Anti-PKC γ pAb

Lane 1: Human HepG2 cell lysate 30 μ g
 Lane 2: Human HeLa cell lysate 30 μ g
 Lane 3: Human BGC-823 cell lysate 30 μ g
 Lane 4: Human MGC-803 cell lysate 30 μ g
 Separation gel: 8% polyacrylamide
 Electrophoresis: 100V, 4°C, 3h
 Transmembrane: 100V, 4°C, 1h
 Blocking: 5% w/v nonfat dry milk, 1 \times TBST, at RT with gentle shaking
 Primary antibody: 1:1000 in blocking buffer, 4°C, overnight
 Secondary antibody (WLA023a) : 1:5000-1:10000, 45min
 Detection: ECL, 30s-2min