

Anti-Bag3 Rabbit pAb



WL04647

For Research Use Only. Not For Use In Diagnostic Procedures

Product Information

| | | | |
|----------------------------|---|---------------|--|
| Product name | Anti-Bag3 Rabbit pAb | | |
| Source | Rabbit | | |
| Species reactivity | Human, Mouse, Rat | | |
| Tested applications | Western blot | 1:1000-1:2000 | |
| | <i>*Suggested working dilutions are given as a guide only. It is recommended that the user titrates the product for use in their own experiment using appropriate negative and positive controls.</i> | | |
| Molecular Wt. | Predicted band size: 62 kDa Observed band size: 86 kDa | | |
| Pack size | 50/100/200/500/1000µl | | |
| Storage | Store at -20°C. Avoid freeze/thaw cycles. | | |
| Storage buffer | Supplied in 20 mM phosphate (pH 7.5), 150 mM NaCl, 100 µg/ml BSA, 50% glycerol and less than 0.02% sodium azide | | |

General Information

Background

BAG3 (Bcl2-associated athanogene 3) belongs to the BAG protein family, the co-chaperone that binds to Hsc70/Hsp70 through the BAG domain and modulates their activity in polypeptide folding. Contains a WW domain in the N-terminal region and a BAG domain in the C-terminal region. The BAG domains of BAG1, BAG2, and BAG3 interact specifically with the Hsc70 ATPase domain in vitro and in mammalian cells.

Immunogen

Polyclonal antibody is produced by immunizing animals with a synthetic peptide of Bag3.

Purification

Polyclonal antibody was purified by Protein A affinity chromatography.

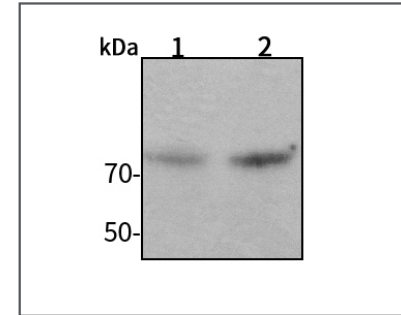
Anti-Bag3 Rabbit pAb



WL04647

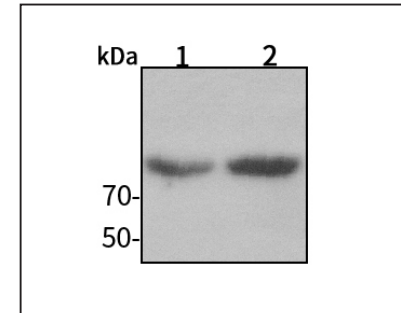
For Research Use Only. Not For Use In Diagnostic Procedures

Product Images



Western blot-Anti-Bag3 pAb

Lane 1: Human HeLa cell lysate 30µg
 Lane 2: Human MCF-7 cell lysate 30µg
 Separation gel: 8% polyacrylamide
 Electrophoresis: 100V, 4°C, 3h
 Transmembrane: 100V, 4°C, 1h
 Blocking: 5% w/v nonfat dry milk, 1×TBST, at RT with gentle shaking
 Primary antibody: 1:1000 in blocking buffer, 4°C, overnight
 Secondary antibody (WLA023a) : 1:5000-1:10000, 45min
 Detection: ECL, 30s-2min



Western blot-Anti-Bag3 pAb

Lane 1: Mouse kidney tissue lysate 30µg
 Separation gel: 8% polyacrylamide
 Electrophoresis: 100V, 4°C, 3h
 Transmembrane: 100V, 4°C, 1h
 Blocking: 5% w/v nonfat dry milk, 1×TBST, at RT with gentle shaking
 Primary antibody: 1:1000 in blocking buffer, 4°C, overnight
 Secondary antibody (WLA023a) : 1:5000-1:10000, 45min
 Detection: ECL, 30s-2min