

Anti-PAO/SMOX Rabbit pAb



WL04218

For Research Use Only. Not For Use In Diagnostic Procedures

Product Information

Product name	Anti-PAO/SMOX Rabbit pAb	
Source	Rabbit	
Species reactivity	Human, Mouse, Rat	
Tested applications	Western blot	1:500-1:1000

**Suggested working dilutions are given as a guide only. It is recommended that the user titrates the product for use in their own experiment using appropriate negative and positive controls.*

Molecular Wt.	62 kDa
Pack size	50/100/200/500/1000 μ l
Storage	Store at -20°C. Avoid freeze/thaw cycles.
Storage buffer	Supplied in 20 mM phosphate (pH 7.5), 150 mM NaCl, 100 μ g/ml BSA, 50% glycerol and less than 0.02% sodium azide

General Information

Background

This gene encodes an FAD-containing enzyme that catalyzes the oxidation of spermine to spermidine and secondarily produces hydrogen peroxide. The PAO protein regulates polyamine intracellular concentration and may act as a determinant of cellular sensitivity to the antitumor polyamine analogs. PAO contributes to β -alaline production via aldehyde dehydrogenase conversion of 3-amino-propanal. The PAO gene encodes more than five transcript variants which encode four active isoenzymes.

Immunogen

Polyclonal antibody is produced by immunizing animals with a synthetic peptide of PAO/SMOX.

Purification

Polyclonal antibody was purified immunogen affinity chromatography.

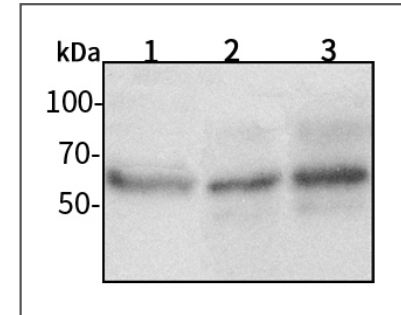
Anti-PAO/SMOX Rabbit pAb



WL04218

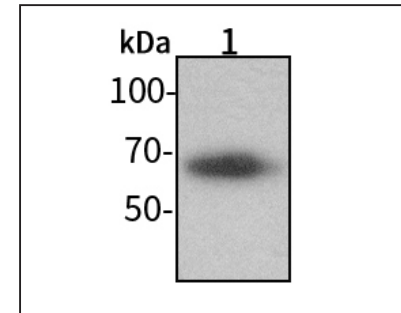
For Research Use Only. Not For Use In Diagnostic Procedures

Product Images



Western blot-Anti-PAO/SMOX pAb

Lane 1: Human HeLa cell lysate 30 μ g
 Lane 2: Human HEK293 cell lysate 30 μ g
 Lane 3: Human SW480 cell lysate 30 μ g
Separation gel: 10% polyacrylamide
Electrophoresis: 100V, 4°C, 3h
Transmembrane: 100V, 4°C, 1.5-2h
Blocking: 5% w/v nonfat dry milk, 1 \times TBST, at RT with gentle shaking
Primary antibody: 1:500 in blocking buffer, 4°C, overnight
Secondary antibody-HRP: 1:5000-1:10000 in blocking buffer, RT, 45min
Detection: ECL, 30s-2min



Western blot-Anti-PAO/SMOX pAb

Lane 1: Mouse kidney tissue lysate 30 μ g
Separation gel: 10% polyacrylamide
Electrophoresis: 100V, 4°C, 3h
Transmembrane: 100V, 4°C, 1.5-2h
Blocking: 5% w/v nonfat dry milk, 1 \times TBST, at RT with gentle shaking
Primary antibody: 1:500 in blocking buffer, 4°C, overnight
Secondary antibody-HRP: 1:5000-1:10000 in blocking buffer, RT, 45min
Detection: ECL, 30s-2min