

Anti-E2A Rabbit pAb



WL03130

For Research Use Only. Not For Use In Diagnostic Procedures

Product Information

Product name	Anti-E2A Rabbit pAb	
Source	Rabbit	
Species reactivity	Human, Mouse, Rat	
Tested applications	WB	1:500-1:1000
Pack size	50/100/200/500/1000µl	
Storage	Store at -20°C. Avoid freeze/thaw cycles.	
Storage buffer	Supplied in 20 mM phosphate (pH 7.5), 150 mM NaCl, 100 µg/ml BSA, 50% glycerol and less than 0.02% sodium azide	

General Information

Background

E2A is a member of the E protein (class I) family of helix-loop-helix transcription factors. E proteins play a critical role in lymphopoiesis, and the protein is required for B and T lymphocyte development. Alternative splicing generates two E2A isoforms (E47 and E12) that are actively involved in B cell lineage commitment, B cell maturation, IgK V-J rearrangement, peripheral B cell development, and tumor suppression. E12 and E47 are nuclear proteins that form heterodimers with Myo D transcription factors and play a role in determining tissue-specific cell fate during embryogenesis. E12 and E47 bind to the kappa-E2 site in the kappa immunoglobulin gene enhancer.

Immunogen

Polyclonal antibody is produced by immunizing animals with a synthetic peptide of E2A.

Purification

Polyclonal antibody was purified by immunogen affinity chromatography.

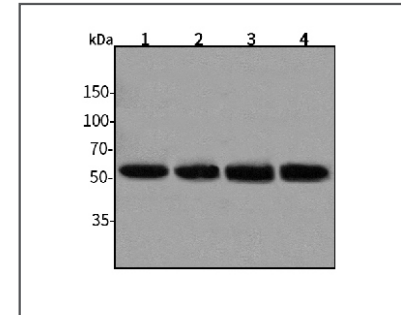
Anti-E2A Rabbit pAb



WL03130

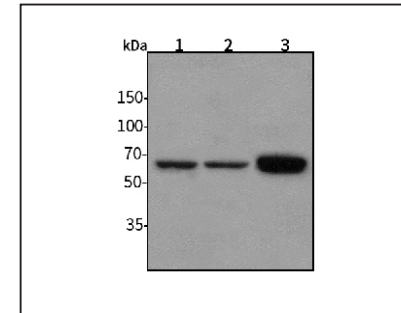
For Research Use Only. Not For Use In Diagnostic Procedures

Product Images



Western blot-Anti-E2A pAb

Lane 1: Human HepG2 cell lysate
Lane 2: Human HeLa cell lysate
Lane 3: Human BGC-823 cell lysate
Lane 4: Human MGC-803 cell lysate
All lanes: Anti-E2A at 1:1000 dilution
 Lysates/proteins at 20-50 µg per lane.
 Predicted band size: 68 kDa
 Observed band size: 68 kDa



Western blot-Anti-E2A pAb

Lane 1: Mouse kidney tissue lysate
Lane 2: Mouse heart tissue lysate
Lane 3: Rat liver tissue lysate
All lanes: Anti-E2A at 1:1000 dilution
 Lysates/proteins at 20-50 µg per lane.
 Predicted band size: 68 kDa
 Observed band size: 68 kDa